

LOC I-ITH <b>108.7</b>	APP CRS <b>325°</b>	Rwy Idg TDZE Apt Elev	<b>6602</b> <b>1099</b> <b>1099</b>
---------------------------	------------------------	-----------------------------	---

# ILS or LOC RWY 32

ITHACA TOMPKINS RGNL (ITH)

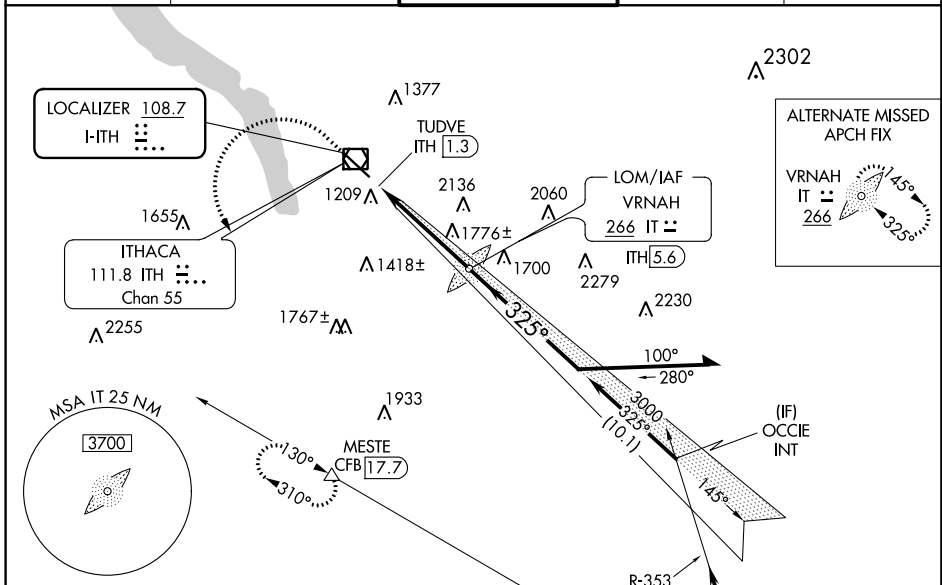
ADF or DME required for LOC only. DME required.

**⚠** Circling NA to Rwy 15 and 33. Inop table does not apply to S-ILS 32. When local altimeter setting not received, use Elmira altimeter setting and increase S-ILS 32 DA to 1433 feet and all MDA 100 feet; increase S-LOC 32 Cat B visibility to RVR 5500 and increase S-LOC Cat C/D visibility 1/2 SM and Circling Cat B/C visibility 1/4 SM. DME from ITH VOR/DME. Simultaneous reception of I-ITH LOC and ITH DME required.

**MALSR**  
**AG**

**MISSED APPROACH:**  
Climb to 2600 then climbing left turn to 4000 on CFB VOR/DME R-310 to MESTE/CFB VOR/DME 17.7 DME and hold.

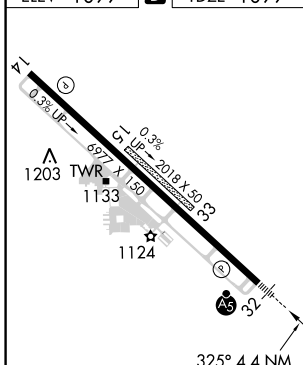
ATIS <b>125.175</b>	ELMIRA APP CON * <b>124.3 257.8</b>	ITHACA TOWER * <b>119.6 (CTAF) 0</b>	GND CON <b>121.8</b>	UNICOM <b>122.95</b>
------------------------	--	---	-------------------------	-------------------------



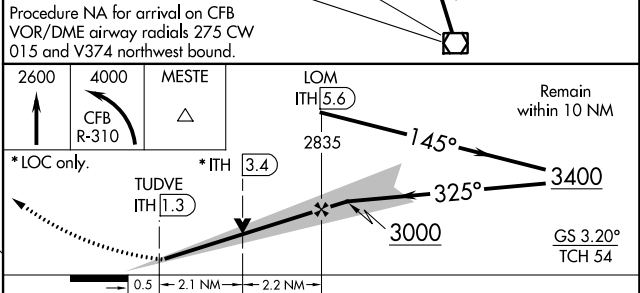
NE-2, 12 SEP 2019 to 10 OCT 2019

NE-2, 12 SEP 2019 to 10 OCT 2019

ELEV 1099	<b>D</b>	TDZE 1099
-----------	----------	-----------



Procedure NA for arrival on CFB VOR/DME airway radials 275 CW 015 and V374 northwest bound.



CATEGORY	A	B	C	D
S-ILS 32	1349/40 250 (300-3/4)			
S-LOC 32	2040/40	941 (1000-3/4)	2040-2	941 (1000-2)
<b>C</b> CIRCLING	2040-1 1/4	941 (1000-1 1/4)	2040-2 3/4	2440-3 941 (1000-2 3/4)

FAF to MAP 4.4 NM					
Knots	60	90	120	150	180
Min:Sec	4:24	2:56	2:12	1:46	1:28