

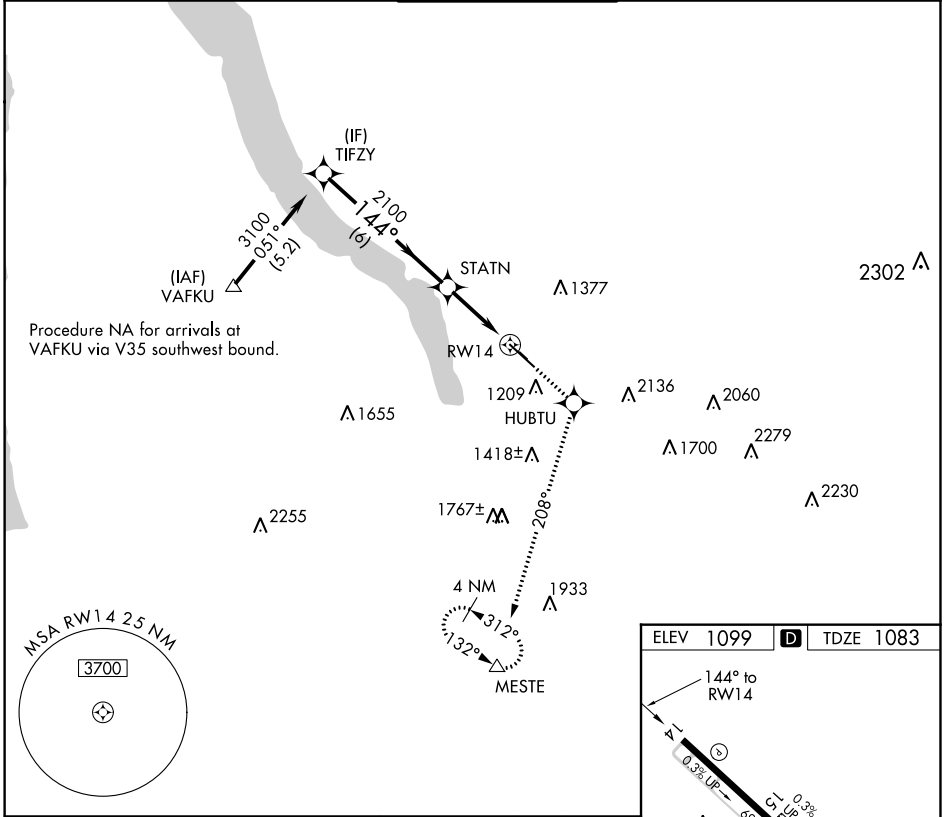
WAAS CH 50415 W14A	APP CRS 144°	Rwy Idg TDZE Apt Elev	6602 1083 1099
--	------------------------	-----------------------------	---

RNAV (GPS) Z RWY 14

ITHACA TOMPKINS RGNL (ITH)

	DME/DME RNP-0.3 NA. Visibility reduction by helicopters NA. When local altimeter setting not received, use Elmira altimeter setting and increase DA 84 feet and LPV all Cats visibility 1/4 mile.	MISSED APPROACH: Climb to 3800 direct HUBTU and via track 208° to MESTE and hold.
	-19°C	

ATIS 125.175	ELMIRA APP CON * 124.3 257.8	ITHACA TOWER * 119.6 (CTAF) 0	GND CON 121.8	UNICOM 122.95
------------------------	--	---	-------------------------	-------------------------



NE-2, 12 SEP 2019 to 10 OCT 2019

NE-2, 12 SEP 2019 to 10 OCT 2019

