

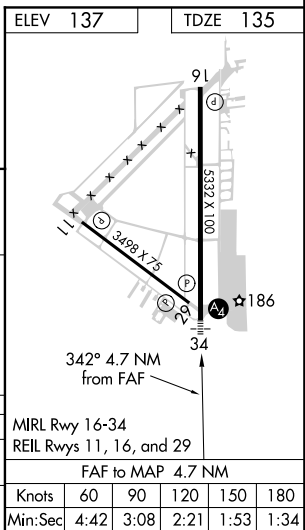
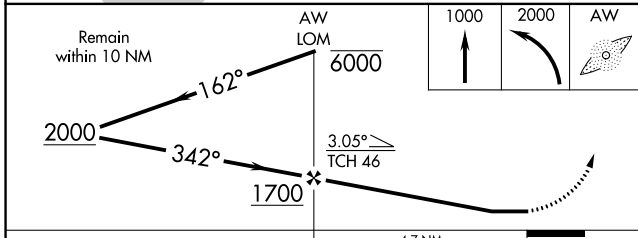
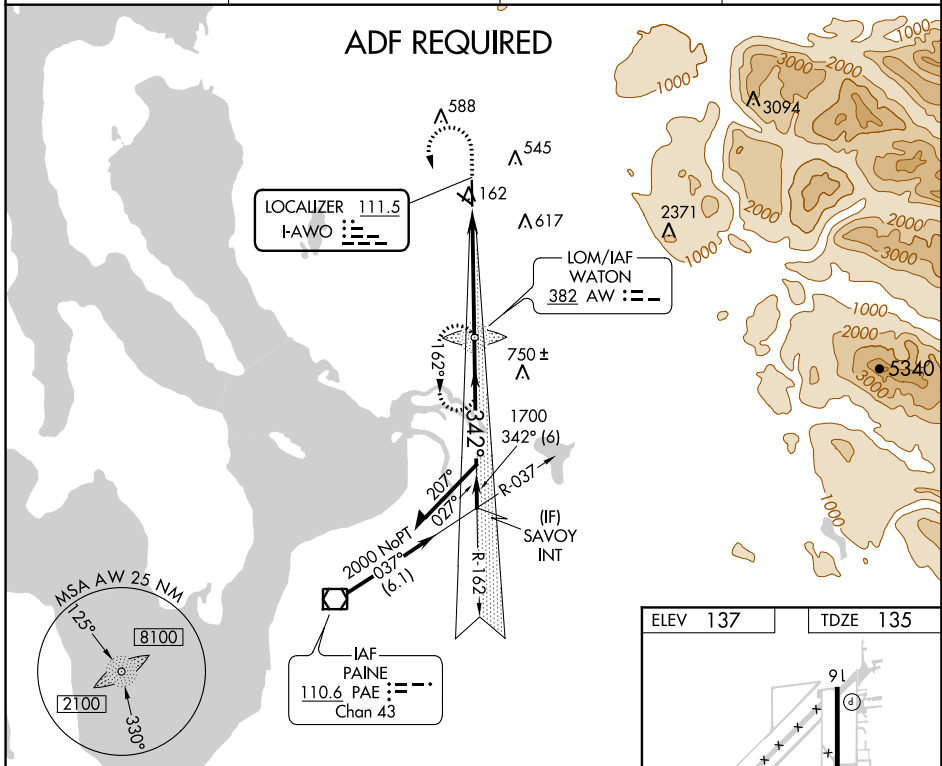
LOC I-AWO <b>111.5</b>	APP CRS <b>342°</b>	Rwy ldg <b>5332</b> TDZE <b>135</b> Apt Elev <b>137</b>
---------------------------	------------------------	---

# LOC RWY 34

ARLINGTON MUNI (AWO)

<p><b>ADF REQUIRED</b></p> <p>ADF required. When local altimeter setting not received use Whidbey Island NAS (Ault Field) altimeter setting and increase all MDA 80 feet and increase S-34 and Circling Cats C and D visibility ¼ mile. For inoperative MALS, increase S-34 Cats C and D visibility to 1¾. For inoperative MALS when using Whidbey Island NAS (Ault Field) altimeter setting, increase S-34 Cat D visibility to 1½.</p>	<p><b>MALS</b></p> <p>MISSED APPROACH: Climb to 1000 then climbing left turn to 2000 direct WATON LOM and hold.</p>
---	---

AWOS-3PT <b>135.625</b>	SEATTLE APP CON <b>128.5 306.9</b>	CLNC DEL <b>121.725</b>	CTAF <b>122.725</b>
----------------------------	---------------------------------------	----------------------------	------------------------



CATEGORY	A	B	C	D
S-34	580-¾ 445 (500-¾)		580-1 445 (500-1)	
CIRCLING	800-1 663 (700-1)	860-1 723 (800-1)	860-2 723 (800-2)	920-2½ 783 (800-2½)

NW-1, 12 SEP 2019 to 10 OCT 2019

NW-1, 12 SEP 2019 to 10 OCT 2019