

LOC/DME I-LFT	APP CRS	Rwy Idg	7659
109.5	216°	TDZE	38
Chan 32		Apt Elev	42

ILS or LOC RWY 22L

LAFAYETTE RGNL/PAUL FOURNET FIELD (L.F.T)

VDP NA with Acadiana Rgnl altimeter setting. When local altimeter setting not received, use Acadiana Rgnl altimeter setting: increase DA to 267 feet; increase all MDA 40 feet and S-LOC 22L Cat C/D visibility to RVR 5000. For inop MALSRS when using Acadiana Rgnl altimeter setting, increase S-LOC 22L Cat C and D visibility to 1½ mile.
****RVR 1800 authorized with use of FD or AP or HUD to DA (NA when using Acadiana Rgnl altimeter setting).**

MALSRS

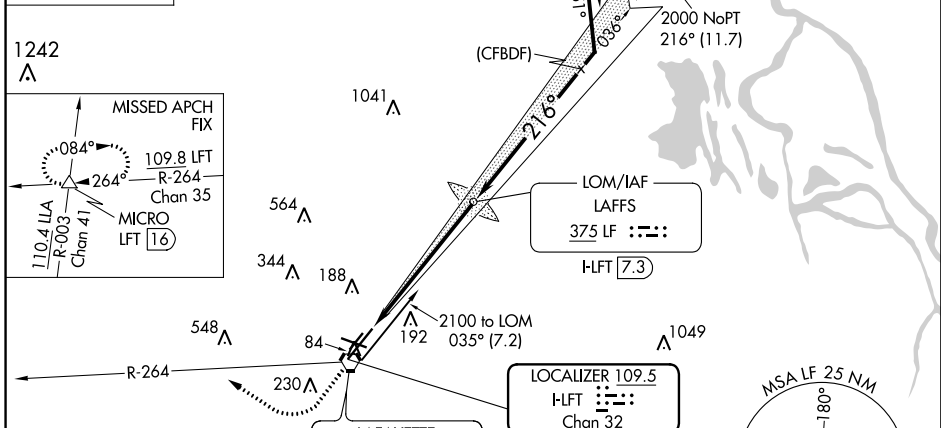
MISSED APPROACH: Climb to 800 then climbing right turn to 2100 on LFT VORTAC R-264 to MICRO INT/ LFT 16 DME and hold.

ATIS	LAFAYETTE APP CON *	LAFAYETTE TOWER *	GND CON	CLNC DEL	UNICOM
134.05	121.1 363.0	118.5 (CTAF) 0 257.8	121.8	125.55	122.95

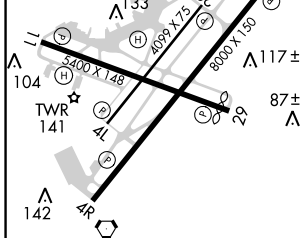
ALTERNATE MISSED APCH FIX

LAFSS 375 LF

Procedure NA for arrivals at BEDDY on V559 eastbound.



ELEV 42	D	TDZE 38
---------	---	---------



REIL Rwy 4L, 4R, 11, 22R and 29
 MIRL Rwy 11-29 and 4L-22R
 HIRL Rwy 4R-22L

FAF to MAP 5.9 NM

Knots	60	90	120	150	180
Min:Sec	5:54	3:56	2:57	2:22	1:58

800	2100	MICRO
↑	↙	△
*LOC only.		

LAFSS LOM I-LFT 7.3

VGSI and ILS glidepath not coincident (VGSI Angle 3.00/TCH 50).
 Remain within 10 NM

GS 3.00° TCH 54

CATEGORY	A	B	C	D
S-ILS 22L**		238/24	200 (200-½)	
S-LOC 22L	480/24	442 (500-½)	480/45	442 (500-¾)
CIRCLING	540-1 498 (500-1)	580-1 538 (600-1)	580-1½ 538 (600-1½)	660-2 618 (700-2)

SC-4, 12 SEP 2019 to 10 OCT 2019

SC-4, 12 SEP 2019 to 10 OCT 2019