

WAAS CH 50503 W22A	APP CRS 216°	Rwy Idg TDZE Apt Elev	7659 38 42
--	------------------------	-----------------------------	---------------------------------------

RNAV (GPS) RWY 22L

LAFAYETTE RGNL/PAUL FOURNET FIELD (LFT)

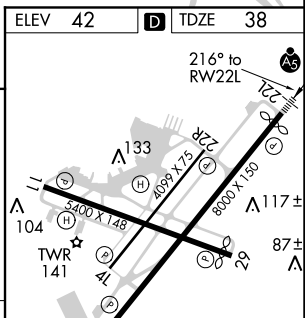
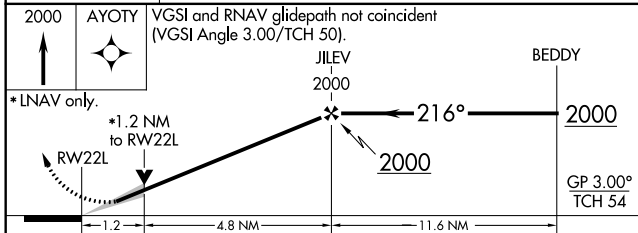
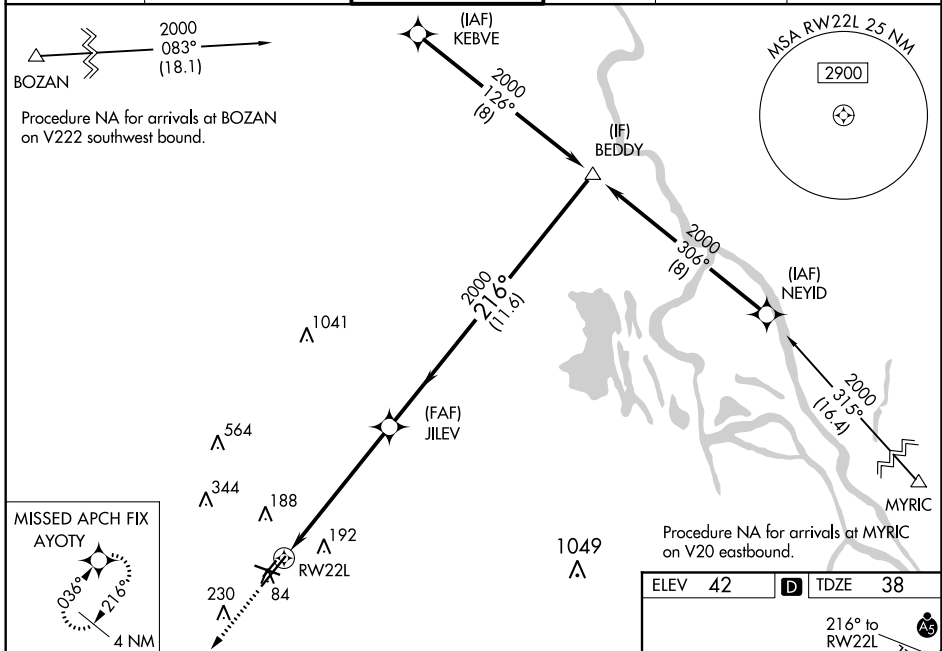
RNP APCH.

For uncompensated Baro-VNAV systems, LNAV/VNAV NA below -15°C (5°F) or above 54°C (130°F). VDP NA with Acadiana Rgnl altimeter setting. When local altimeter setting not received, use Acadiana Rgnl altimeter setting and increase all DA 29 feet and all MDA 40 feet; increase LNAV/VNAV all Cats visibility to RVR 3500. For inop MALS, increase LNAV Cats C and D visibility 3/8 mile. For inop MALS, when using Acadiana Rgnl altimeter setting, increase LNAV/VNAV all Cats visibility to RVR 6000. Baro-VNAV NA when using Acadiana Rgnl altimeter setting.

MALS

MISSED APPROACH: Climb to 2000 direct AYOTY and hold.

ATIS 134.05	LAFAYETTE APP CON * 121.1 363.0	LAFAYETTE TOWER * 118.5 (CTAF) 0 257.8	GND CON 121.8	CLNC DEL 125.55	UNICOM 122.95
-----------------------	---	--	-------------------------	---------------------------	-------------------------



CATEGORY	A	B	C	D
LPV DA		238/24	200 (200-1/2)	
LNAV/VNAV DA		349/24	311 (400-1/2)	
LNAV MDA	480/24	442 (500-1/2)	480/45	442 (500-3/4)
CIRCLING	540-1 498 (500-1)	580-1 538 (600-1)	580-1 1/2 538 (600-1 1/2)	660-2 618 (700-2)

REIL Rwy 4L, 4R, 11, 22R and 29
MIRL Rwy 11-29 and 4L-22R
HIRL Rwy 4R-22L