

WAAS CH <b>40433</b> <b>W23A</b>	APP CRS <b>234°</b>	Rwy Idg TDZE Apt Elev	<b>3601</b> <b>3204</b> <b>3204</b>
----------------------------------------	------------------------	-----------------------------	-------------------------------------------

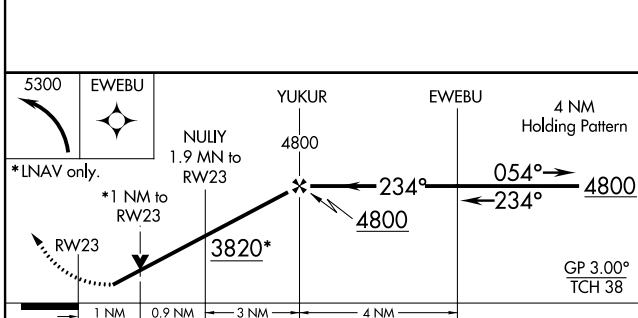
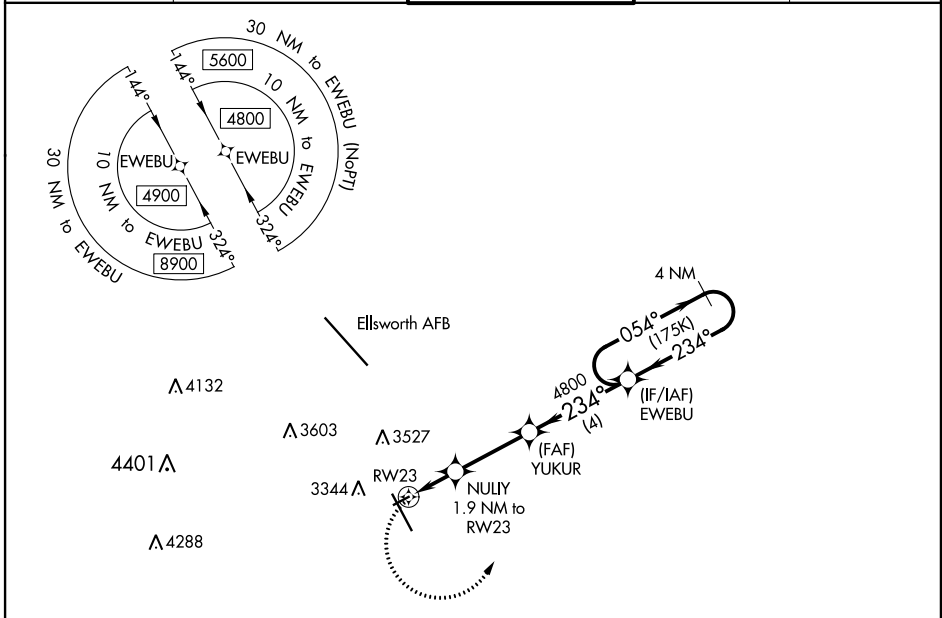
# RNAV (GPS) RWY 23

RAPID CITY RGNL (R.A.P)

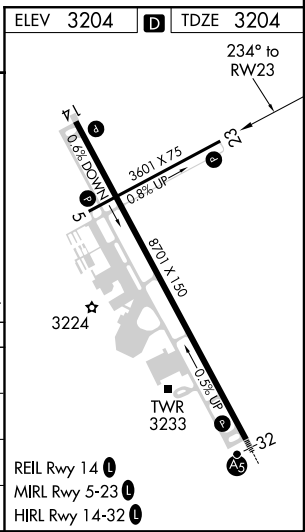
**⚠** For uncompensated Baro-VNAV systems, LNAV/VNAV NA below -21°C (-5°F) or above 54°C (130°F). DME/DME RNP-0.3 NA. When local altimeter setting not received, use Ellsworth AFB altimeter setting and increase all DA 25 feet and all MDA 40 feet. VDP and Baro-VNAV NA when using Ellsworth AFB altimeter setting.

**⚠** MISSED APPROACH: Climbing left turn to 5300 direct EWEBU and hold.

ASOS <b>118.525</b>	ELLSWORTH APP CON * <b>119.5 259.1</b>	RAPID CITY TOWER * <b>125.85 (CTAF) 0 257.8</b>	GND CON <b>121.9</b>	UNICOM <b>122.95</b>
------------------------	-------------------------------------------	----------------------------------------------------	-------------------------	-------------------------



CATEGORY	A	B	C	D
LPV DA	3454-1	250 (300-1)		NA
LNAV/VNAV DA	3454-1	250 (300-1)		NA
LNAV MDA	3560-1	356 (400-1)		NA
<b>C</b> CIRCLING	3660-1 456 (500-1)	3840-1 636 (700-1)		NA



NC-1, 12 SEP 2019 to 10 OCT 2019

NC-1, 12 SEP 2019 to 10 OCT 2019