

VORTAC RAP <b>112.3</b> Chan <b>70</b>	APP CRS <b>322°</b>	Rwy Idg <b>8701</b> TDZE <b>3160</b> Apt Elev <b>3204</b>
--	------------------------	---

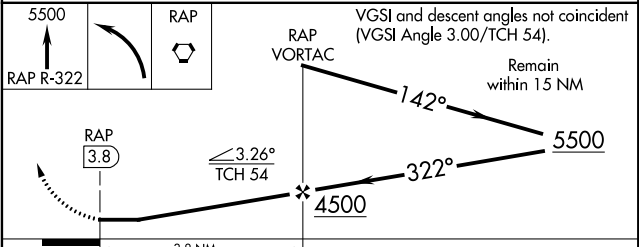
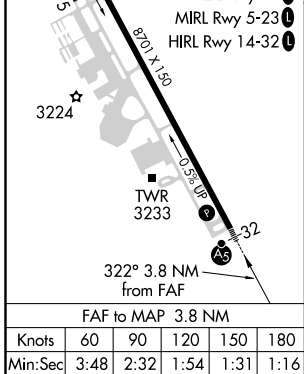
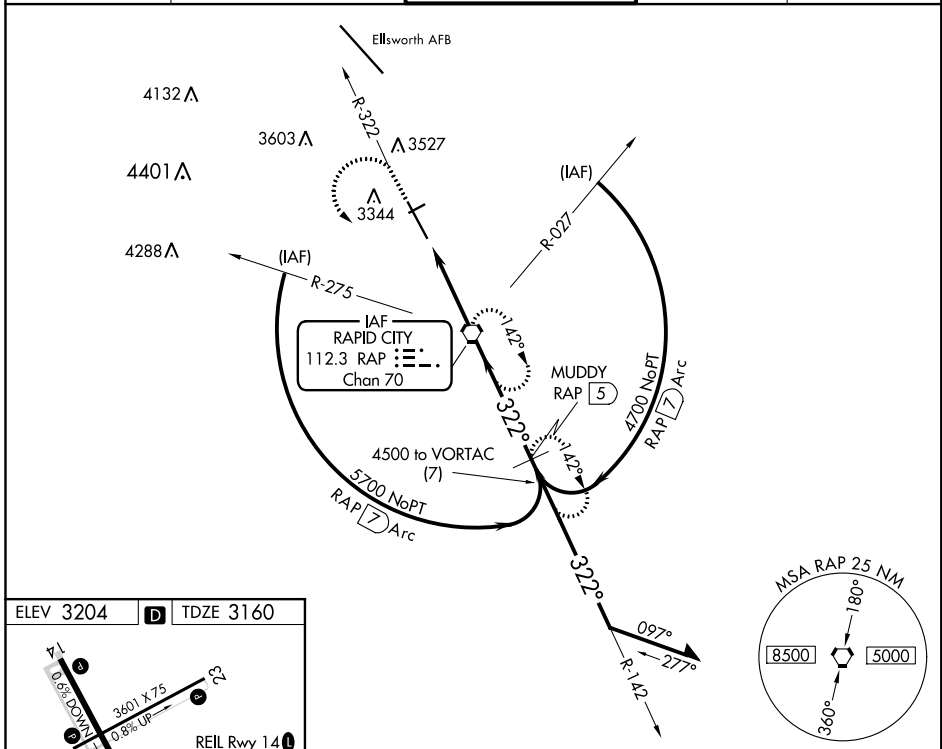
# VOR or TACAN RWY 32

RAPID CITY RGNL (R.A.P.)

**⚠** For inoperative MALSRS increase S-32 visibility all Cats to 1. When local altimeter setting not received, use Ellsworth altimeter setting and increase all MDA 40 ft and S-32 visibility all Cats to RVR 4500. For inoperative MALSRS when using Ellsworth altimeter setting, increase visibility all Cats to 1.

**MALSRS** MISSED APPROACH: Climb to 5500 via RAP R-322 then left turn direct RAP VORTAC and hold. (TACAN aircraft continue via RAP R-142 to MUDDY 5 DME and hold SE, RT, 322° inbound.)

ASOS <b>118.525</b>	ELLSWORTH APP CON <b>119.5 259.1</b>	RAPID CITY TOWER ★ <b>125.85 (CTAF) 0 257.8</b>	GND CON <b>121.9</b>	UNICOM <b>122.95</b>
------------------------	---	--	-------------------------	-------------------------



CATEGORY	A	B	C	D	E
S-32	3440/40 280 (300-¾)				
<b>C</b> CIRCLING	3660-1 456 (500-1)	3840-1 636 (700-1)	3840-1¾ 636 (700-1¾)	3840-2 636 (700-2)	3960-2¾ 756 (800-2¾)