

WAAS CH 86529 W15A	APP CRS 148°	Rwy Idg TDZE Apt Elev	4506 1697 1697
--	------------------------	-----------------------------	---

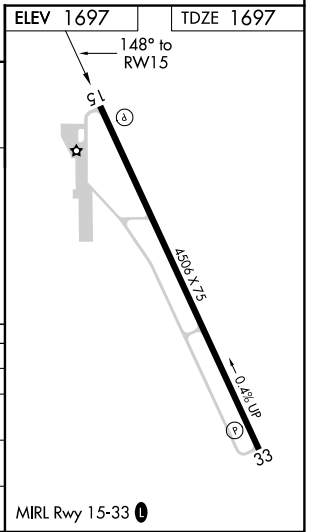
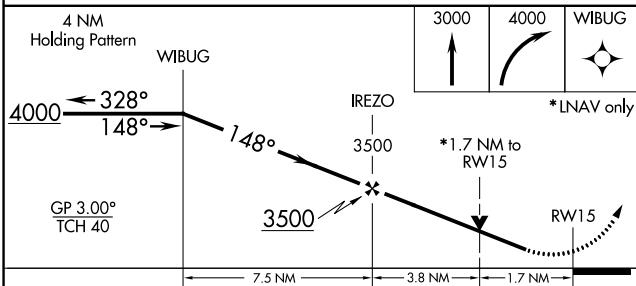
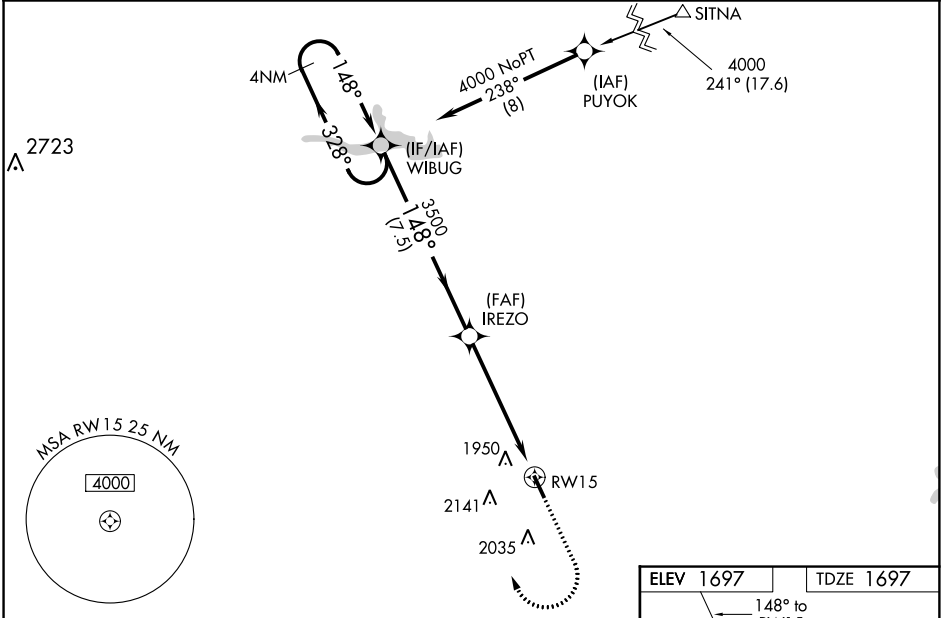
RNAV (GPS) RWY 15

COLEMAN MUNI (COM)

⚠ Baro-VNAV NA when using Brownwood altimeter setting. For uncompensated Baro-VNAV systems, LNAV/VNAV NA below -18°C (0°F) or above 54°C (130°F). When local altimeter setting not received, use Brownwood altimeter setting and increase all DA/MDA 100 feet. Increase LPV all Cats visibility ¼ mile, LNAV/VNAV all Cats visibility ⅓ mile, and LNAV and Circling Cat C visibility ¼ mile. DME/DME RNP-0.3 NA. Helicopter visibility reduction below ½ SM NA. VDP NA when using Brownwood altimeter setting.

⚠ MISSED APPROACH: Climb to 3000 then climbing right turn to 4000 direct WIBUG and hold.

AWOS-3PT 119.1	FORT WORTH CENTER 127.45 290.3	UNICOM 122.8 (CTAF) 0
--------------------------	--	---------------------------------



CATEGORY	A	B	C	D
LPV DA	1947-7/8	250 (300-7/8)		NA
LNAV/VNAV DA	2327-2 1/4	630 (700-2 1/4)		NA
LNAV MDA	2280-1	583 (600-1)	2280-1 3/4 583 (600-1 3/4)	NA
CIRCLING	2300-1	603 (700-1)		NA

SC-3, 12 SEP 2019 to 10 OCT 2019

SC-3, 12 SEP 2019 to 10 OCT 2019