

| | | | |
|--|------------------------|-----------------------------|---|
| WAAS CH 82034 W33A | APP CRS 328° | Rwy Idg TDZE Apt Elev | 4506 1679 1697 |
|--|------------------------|-----------------------------|---|

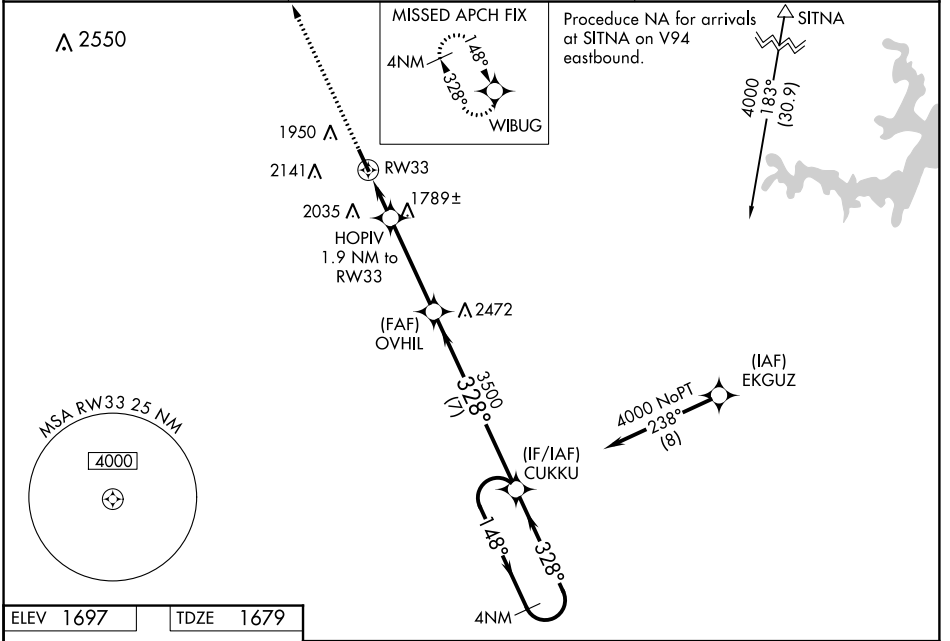
RNAV (GPS) RWY 33

COLEMAN MUNI (COM)

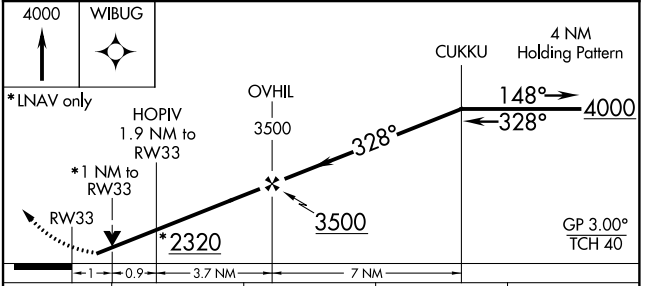
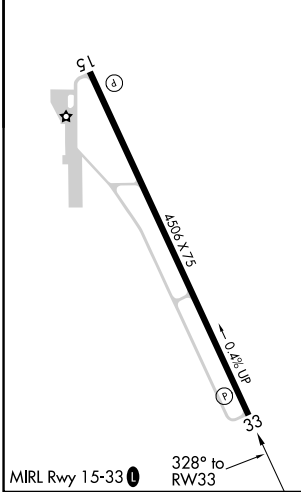
⚠ Baro-VNAV and VDP NA when using Brownwood altimeter setting. For uncompensated Baro-VNAV systems, procedure NA below -18°C (0°F) or above 54°C (130°F). When local altimeter setting not received, use Brownwood altimeter setting and increase all DA 97 feet and all visibilities ¼ mile; increase all MDA 100 feet, LNAV Cat C visibility ⅓ mile, and Circling Cats B and C ¼ mile. DME/DME RNP-0.3 NA. Helicopter visibility reduction below ⅓ SM NA.

MISSED APPROACH: Climb to 4000 direct WIBUG and hold.

| | | |
|--------------------------|--|---------------------------------|
| AWOS-3PT 119.1 | FORT WORTH CENTER 127.45 290.3 | UNICOM 122.8 (CTAF) 0 |
|--------------------------|--|---------------------------------|



| | |
|-----------|-----------|
| ELEV 1697 | TDZE 1679 |
|-----------|-----------|



| CATEGORY | A | B | C | D |
|-------------------|-----------------------|-----------------------|-------------------------|----|
| LPV DA | 1929-7/8 | 250 (300-7/8) | | NA |
| LNAV/VNAV DA | 1929-7/8 | 250 (300-7/8) | | NA |
| LNAV MDA | 2040-1 | 361 (400-1) | | NA |
| Ⓢ CIRCLING | 2300-1 603 (700-1) | 2440-1 743 (800-1) | 2440-2¼ 743 (800-2¼) | NA |

SC-3, 12 SEP 2019 to 10 OCT 2019

SC-3, 12 SEP 2019 to 10 OCT 2019