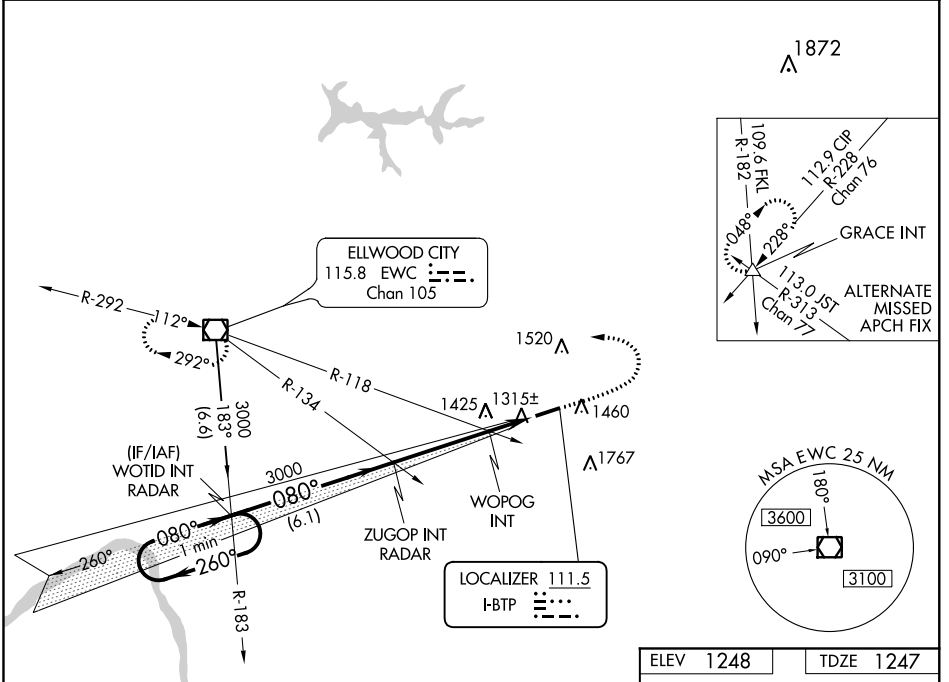


LOC I-BTP 111.5	APP CRS 080°	Rwy Idg TDZE Apt Elev	4801 1247 1248
---------------------------	------------------------	-----------------------------	---

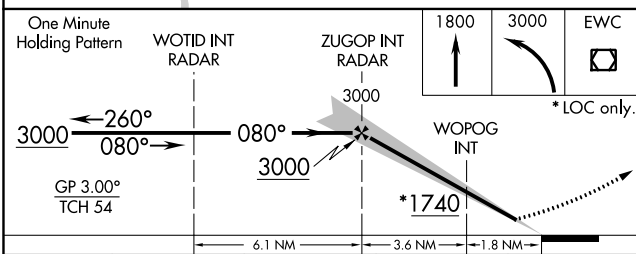
ILS or LOC RWY 8
PITTSBURGH/BUTLER RGNL (BTP)

▽ ▲	Rwy 8 helicopter visibility reduction below 3/4 SM NA. For inop ALS increase S-LOC 8 WOPOG visibility minimums to 1 SM.	MALSF 	MISSED APPROACH: Climb to 1800 then climbing left turn to 3000 direct EWC VOR/DME and hold.
AWOS-3PT 121.450	PITTSBURGH APP CON 124.75 338.2	CLNC DEL 119.4	UNICOM 123.05
			CTAF 123.05



NE-4, 12 SEP 2019 to 10 OCT 2019

NE-4, 12 SEP 2019 to 10 OCT 2019



ELEV 1248	TDZE 1247
-----------	-----------

CATEGORY	A	B	C	D
S-ILS 8	1497-3/4		250 (300-3/4)	
S-LOC 8	1740-3/4	493 (500-3/4)	1740-1/2	493 (500-1/2)
CIRCLING	1820-1	572 (600-1)	2080-2 1/2 832 (900-2 1/2)	2080-2 3/4 832 (900-2 3/4)
WOPOG FIX MINIMUMS (DUAL VOR RECEIVERS REQUIRED)				
S-LOC 8	1580-3/4		333 (400-3/4)	
CIRCLING	1820-1	572 (600-1)	2080-2 1/2 832 (900-2 1/2)	2080-2 3/4 832 (900-2 3/4)

