

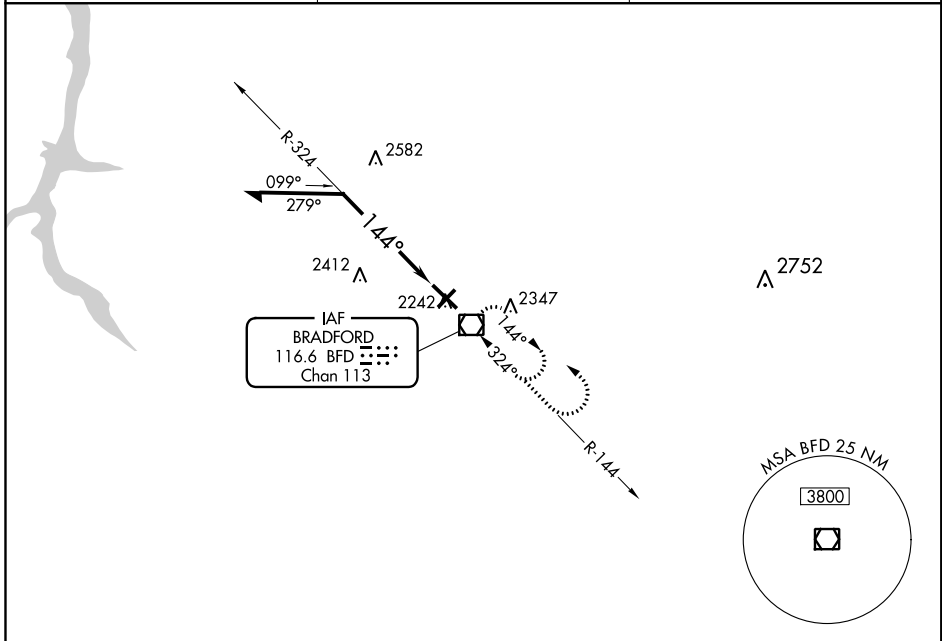
VOR/DME BFD 116.6 Chan 113	APP CRS 144°	Rwy Idg TDZE 2118 Apt Elev 2143	6306
--	------------------------	---	-------------

VOR RWY 14
BRADFORD RGNL (BFD)

⚠ Visibility reduction by helicopters NA. When local altimeter setting not received, use St. Marys altimeter setting and increase all MDA 100 feet and increase S-14 and Circling Cats A, C, and D visibilities ¼ mile.

MISSED APPROACH: Climb to 3900 then climbing left turn to 4000 direct BFD VOR/DME and hold.

ASOS 133.825	CLEVELAND CENTER 124.325 353.85	UNICOM 123.075 (CTAF) 0
------------------------	---	-----------------------------------

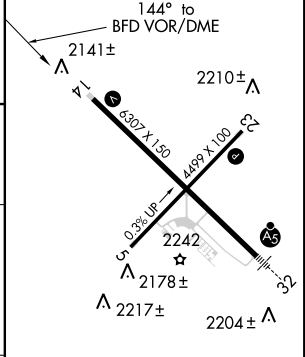


NE-4, 12 SEP 2019 to 10 OCT 2019

NE-4, 12 SEP 2019 to 10 OCT 2019



ELEV 2143	D	TDZE 2118
-----------	----------	-----------



Remain within 10 NM	BFD VOR/DME	3900	4000	BFD
		↑	↶	
4000		2.5 NM		

CATEGORY	A	B	C	D
S-14	2940-1 822 (800-1)	2940-1¼ 822 (800-1¼)	2940-2½ 822 (800-2½)	2940-2¾ 822 (800-2¾)
CIRCLING	2940-1 797 (800-1)	2940-1¼ 797 (800-1¼)	2940-2½ 797 (800-2½)	2940-2¾ 797 (800-2¾)

MIRL Rwy 5-23 **0**
HIRL Rwy 14-32 **0**
REIL Rwys 5, 14 and 23 **0**