

VOR/DME BFD	APP CRS	Rwy Idg	<b>6306</b>
<b>116.6</b>	<b>144°</b>	TDZE	<b>2118</b>
Chan <b>113</b>		Apt Elev	<b>2143</b>

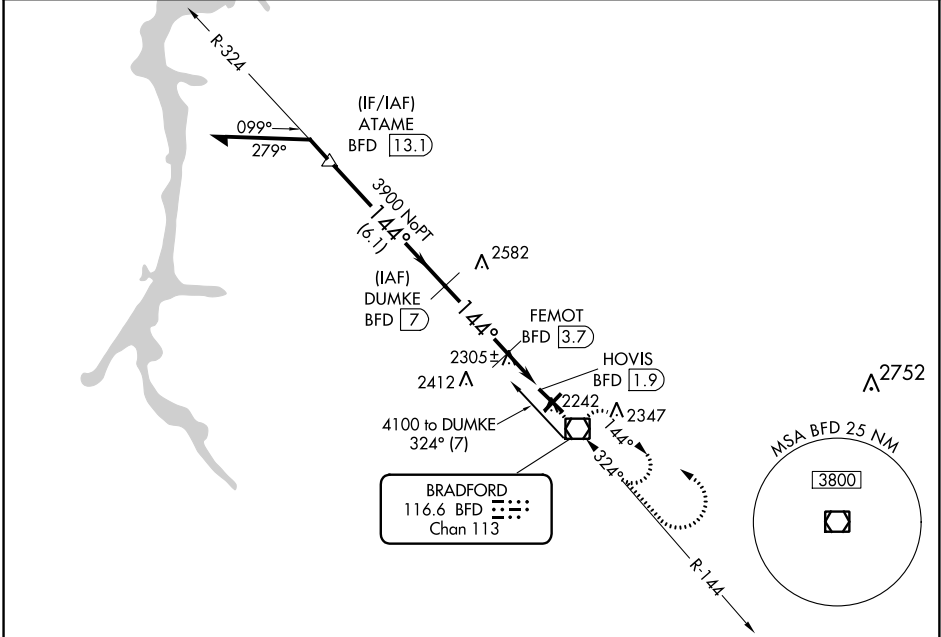
# VOR/DME RWY 14

BRADFORD RGNL (BFD)

**⚠** Visibility reduction by helicopters NA. When local altimeter setting not received, use St Marys altimeter setting and increase all MDA 100 feet and increase S-14 Cat C and D visibility ¼ mile.

**MISSED APPROACH:** Climb direct BFD VOR/DME, then continue climb to 3900 then left turn direct BFD VOR/DME and hold.

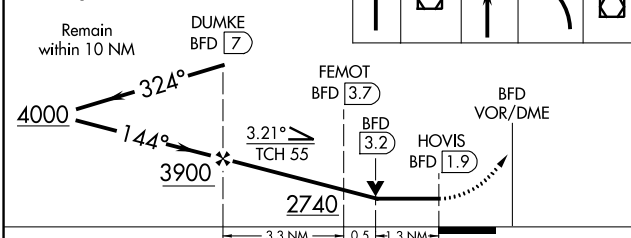
ASOS <b>133.825</b>	CLEVELAND CENTER <b>124.325 353.85</b>	UNICOM <b>123.075 (CTAF) 0</b>
------------------------	---	-----------------------------------



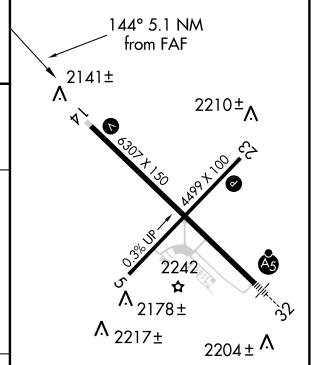
NE-4, 12 SEP 2019 to 10 OCT 2019

NE-4, 12 SEP 2019 to 10 OCT 2019

VGSI and descent angles not coincident (VGSI Angle 3.00/TCH 42).



ELEV	2143	TDZE	2118
------	------	------	------



CATEGORY	A	B	C	D
S-14	2560-1	442 (500-1)	2560-1½ 442 (500-1½)	2560-1½ 442 (500-1½)
CIRCLING	2620-1	477 (500-1)	2620-1½ 477 (500-1½)	2700-2 557 (600-2)

MIRL Rwy 5-23  
HIRL Rwy 14-32  
REIL Rws 5, 14 and 23