

# ILS or LOC RWY 11

LOC I-DJR <b>109.7</b>	APCH CRS <b>109°</b>	Rwy Idg TDZE <b>1068</b> Arprt Elev <b>1068</b>
---------------------------	-------------------------	---

AL-959 [USAF]

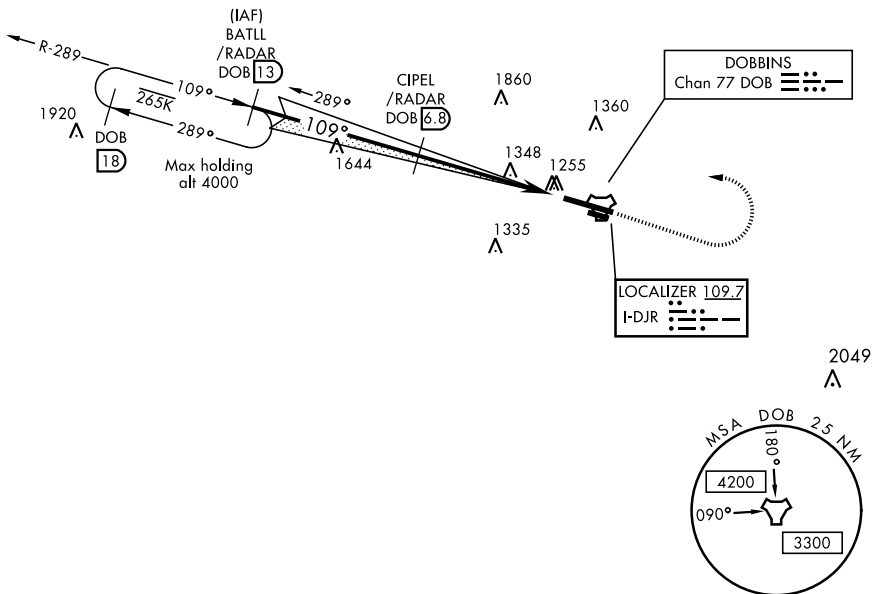
DOBBINS ARB (KMGE)

<p>▼ * When ALS inop, increase RVR to 55 and vis to 1 mile. ** When ALS inop, increase CAT AB RVR to 55 and vis to 1 mile, CAT CDE vis to 1½ miles.</p>	<p>ALSF-1 A1</p>	<p>† MISSED APPROACH: Climb to 2000 track 109°, then climbing left turn to 3000, intercept the DOB R-289 to BATLL and hold.</p>
---	----------------------	---

ATIS ★ <b>269.5</b>	ATLANTA APP CON <b>121.0 268.7</b>	DOBBINS TOWER ★ <b>120.75 370.875</b>	GND CON <b>125.3 275.8</b>	ASR
------------------------	---------------------------------------	--	-------------------------------	-----

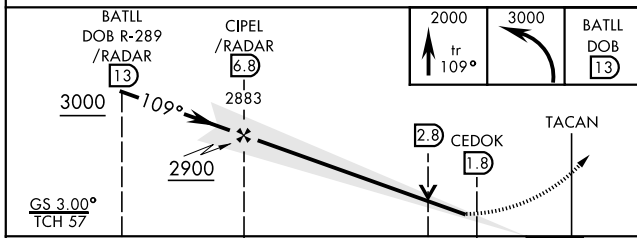
\*\*\* Circling not authorized N of Rwy 11-29 for CAT DE aircraft, Circling to assault strip not authorized all CAT.

† Missed approach requires use of RNAV or ATC RADAR monitoring.

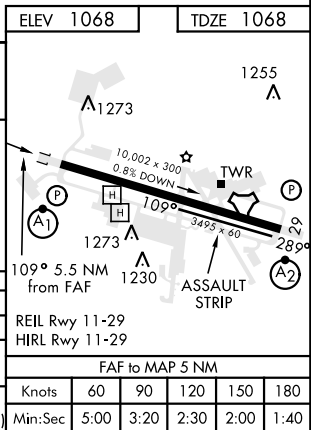


## DME REQUIRED

EMERG SAFE ALT 100 NM 7700



	ELEV 1068		TDZE 1068		
CATEGORY	A	B	C	D	E
S-ILS 11*		1401/40	333	(400-¾)	
S-LOC 11**	1600/40	532 (600-¾)	1600/55	532 (600-1)	
*** CIRCLING	1660-1 592 (600-1)	1700-1¼ 632 (700-1¾)	1700-2 632 (700-2)	1700-2¼ 632 (700-2¼)	



# ILS or LOC RWY 11

SE-4, 12 SEP 2019 to 10 OCT 2019

SE-4, 12 SEP 2019 to 10 OCT 2019