

MARIETTA, GEORGIA

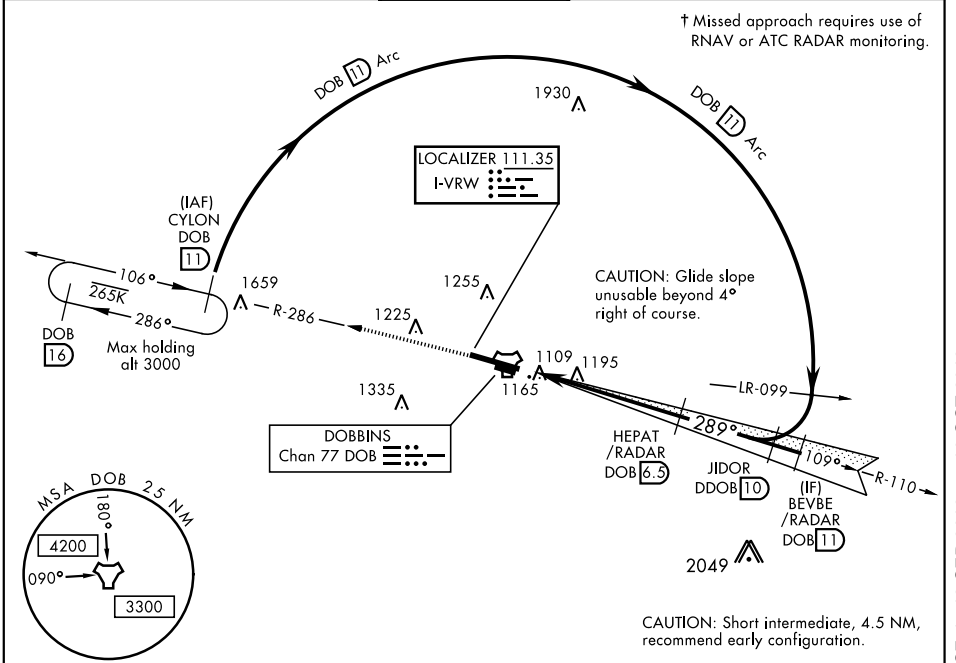
# ILS or LOC RWY 29

LOC I-VRW <b>111.35</b>	APCH CRS <b>289°</b>	Rwy Idg <b>10,002</b> TDZE <b>1014</b> Arprt Elev <b>1068</b>	AL-959 [USAF]	DOBBINS ARB (KMGE)
----------------------------	-------------------------	---	---------------	--------------------

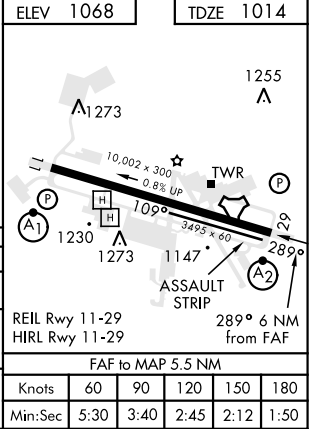
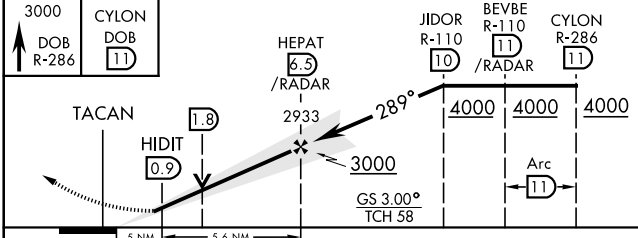
▼ \* When ALS inop, increase CAT AB RVR to 55 and vis to 1 mile, CAT CDE vis to 1 3/8 miles.  
 \*\* Circling not authorized N of Rwy 11-29 for CAT DE aircraft. Circling to assault strip not authorized all CAT.

A2 SALS A2 MISSED APPROACH: Climb to 3000 via DOB R-286 to CYLON and hold.

ATIS ★ <b>269.5</b>	ATLANTA APP CON <b>121.0 268.7</b>	DOBBINS TOWER ★ <b>120.75 370.875</b>	GND CON <b>125.3 275.8</b>	ASR
------------------------	---------------------------------------	--	-------------------------------	-----



**DME REQUIRED**  
EMERG SAFE ALT 100 NM 7700



CATEGORY	A	B	C	D	E
S-ILS 29	1214/40		200	(200-3/4)	
S-LOC 29*	1500/40	486 (500-3/4)	1500/60	486	(500-1 1/8)
<b>CIRCLING</b> **	1660-1	592 (600-1)	1700-1 3/4 632 (700-1 3/4)	1700-2 632 (700-2)	1700-2 1/4 632 (700-2 1/4)

MARIETTA, GEORGIA 33°55'N-84°31'W DOBBINS ARB (KMGE)

Amdt 6 13SEP18

# ILS or LOC RWY 29

SE-4, 12 SEP 2019 to 10 OCT 2019

SE-4, 12 SEP 2019 to 10 OCT 2019