

MARIETTA, GEORGIA

# RNAV (GPS) RWY 11

APCH CRS <b>109°</b>	Rwy Idg <b>10,002</b>
	TDZE <b>1068</b>
	Arpt Elev <b>1068</b>

AL-959 (USAF)

DOBBINS ARB (KMGE)

**⚠** \* When ALS inop, increase CAT AB RVR to 55 and vis to 1 mile, CAT CDE vis to 1 1/2 miles.  
 \*\* Circling NA N of Rwy 11-29 for CAT DE aircraft. Circling to assault strip NA all CAT.

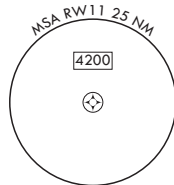
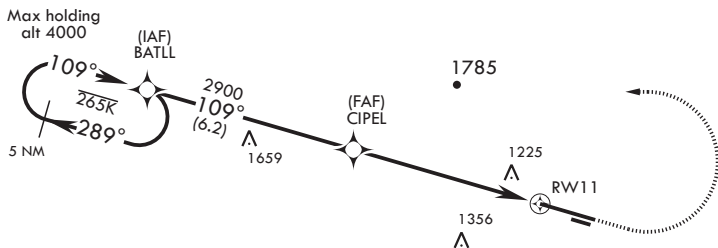


† MISSED APPROACH: Climb to 2000 then climbing left turn to 3000 direct BATLL and hold.

ATIS <b>269.5</b>	ATLANTA APP CON/DEP CON <b>121.0 268.7</b>	TOWER <b>120.75 370.875</b>	GND CON <b>125.3 275.8</b>	ASR
----------------------	---	--------------------------------	-------------------------------	-----

DME/DME RNP-0.3 NA  
 RNP APCH

† Missed approach requires use of RNAV or ATC RADAR monitoring.



EMERG SAFE ALT 100 NM 7700

				ELEV 1068	TDZE 1068
CATEGORY	A	B	C	D	E
LNAV MDA*	1600/40 532 (600-3/4)		1600/55	532	(600-1)
<b>C</b> CIRCLING**	1660-1	592 (600-1)	1700-1 3/4 632 (700-1 3/4)	1700-2 632 (700-2)	1700-2 1/4 632 (700-2 1/4)

MARIETTA, GEORGIA

33°55'N - 84°31'W

DOBBINS ARB (KMGE)

Amdt 1 28MAR19

# RNAV (GPS) RWY 11

SE-4, 12 SEP 2019 to 10 OCT 2019

SE-4, 12 SEP 2019 to 10 OCT 2019