

APCH CRS 289°	Rwy Idg 10,002
	TDZE 1014
	Arpt Elev 1068

AL-959 (USAF)

DOBBINS ARB (KMGE)

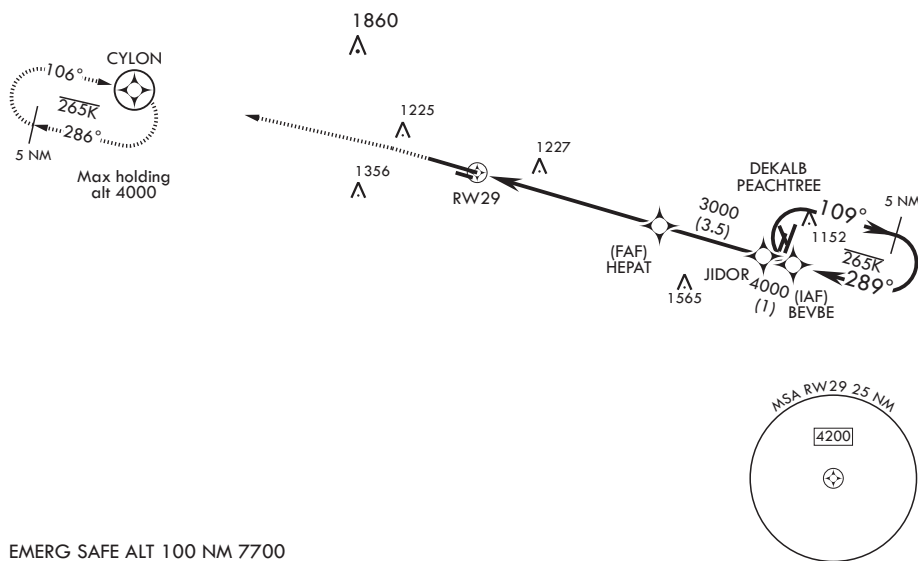
⚠ * When ALS inop, increase CAT AB RVR to 55 and vis to 1 mile, CAT CDE vis to 1 1/2 miles.
 ** Circling not authorized N of Rwy 11-29 for CAT DE. Circling to assault strip not authorized all CAT.

SALS **⚠** MISSED APPROACH: Climb to 2000 then climbing left turn to 3000 direct CYLON and hold.

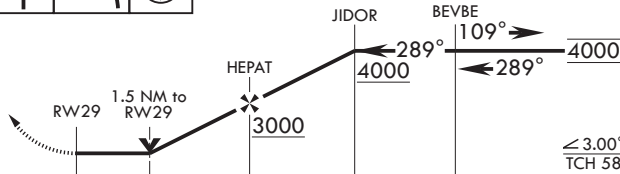
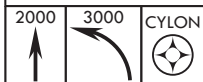
ATIS 269.5	ATLANTA APP CON/DEP CON 121.0 268.7	TOWER 120.75 370.875	GND CON 125.3 275.8	ASR
----------------------	---	--------------------------------	-------------------------------	-----

DME/DME RNP-0.3 NA
RNP APCH

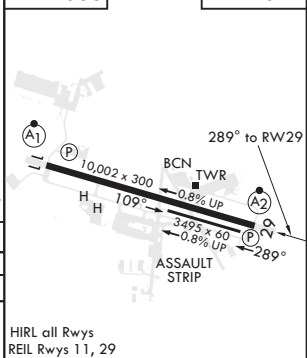
⚠ MISSED APPROACH requires use of RNAV or ATC RADAR monitoring.



EMERG SAFE ALT 100 NM 7700



ELEV 1068 TDZE 1014



CATEGORY	A	B	C	D	E
LNVA MDA*	1540/40 526 (500-3/4)		1540-1 1/4 526	(500-1 1/4)	
C CIRCLING**	1660-1 592 (600-1)		1700-1 3/4 632 (700-1 3/4)	1700-2 632 (700-2)	1700-2 1/4 632 (700-2 1/4)

HIRL all Rwys
REIL Rws 11, 29