

MARIETTA, GEORGIA

TACAN RWY 11

TACAN Chan 77	APCH CRS 106°	Rwy Idg TDZE 1068 Arprt Elev 1068
-------------------------	-------------------------	-------------------------------------------------------

AL-959 [USAF]

DOBBINS ARB (KMGE)

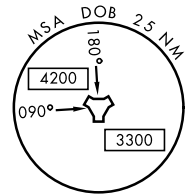
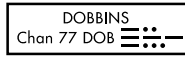
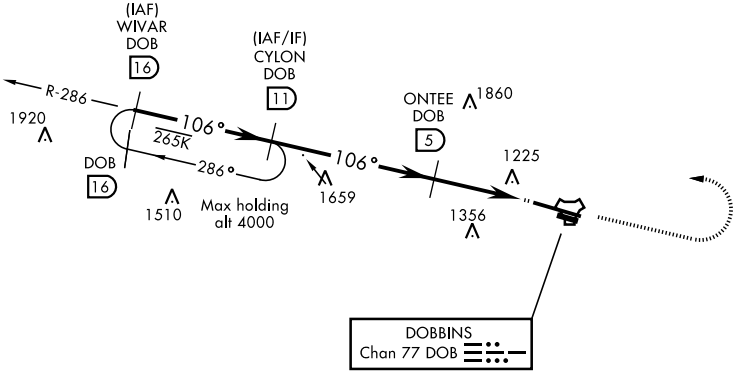
▼ * When ALS inop, increase CAT AB RVR to 55 and vis to 1 mile, CAT CDE vis to 1½ miles.
 ** Circling not authorized N of Rwy 11-29 for CAT D,E aircraft.
 Circling to assault strip not authorized all CAT.



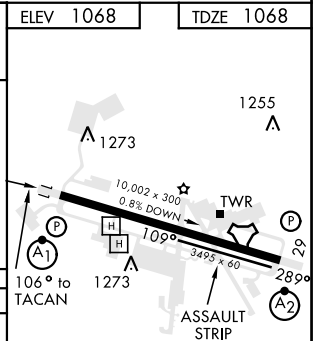
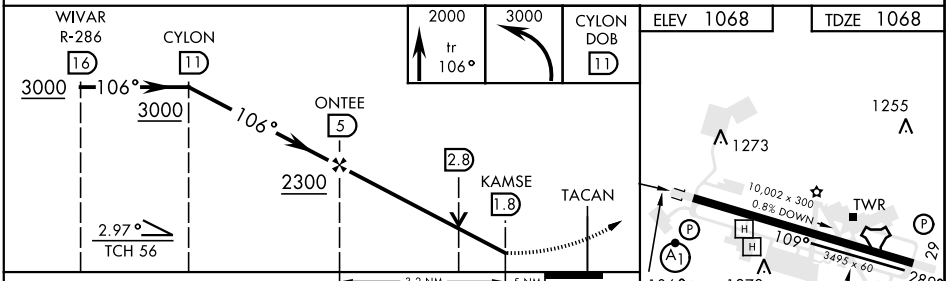
† MISSED APPROACH: Climb to 2000 on track 106°, then climbing left turn to 3000, intercept DOB R-286 to CYLON and hold.

ATIS ★ 269.5	ATLANTA APP CON 121.0 268.7	DOBBINS TOWER ★ 120.75 370.875	GND CON 125.3 275.8	ASR
------------------------	---------------------------------------	------------------------------------------	-------------------------------	-----

† Missed approach requires use of RNAV or ATC RADAR monitoring.



EMERG SAFE ALT 100 NM 7700



CATEGORY	A	B	C	D	E
S-11*	1600/40	532 (600-¾)	1600/55	532 (600-1)	
CIRCLING**	1660-1	592 (600-1)	1700-1¾ 632 (700-1¾)	1700-2 632 (700-2)	1700-2¼ 632 (700-2¼)

REIL Rwy 11-29
HIRL Rwy 11-29

MARIETTA, GEORGIA

33°55'N-84°31'W

DOBBINS ARB (KMGE)

Amtd 6 13SEP18

TACAN RWY 11

SE-4, 12 SEP 2019 to 10 OCT 2019

SE-4, 12 SEP 2019 to 10 OCT 2019