

TACAN RWY 29

TACAN Chan 77	DOB 291°	APCH CRS 291°	Rwy ldg 10,002 TDZE 1014 Arpt Elev 1068	AL-959 [USAF]	DOBBINS ARB (KMGE)
----------------------	-----------------	----------------------	--	---------------	--------------------

▼ * When ALS inop, increase CAT AB RVR to 55 and vis to 1 mile, CAT CDE vis to 1¾ miles.
 ** Circling not authorized N of Rwy 11-29 for CAT DE aircraft. Circling to assault strip not authorized all CAT.

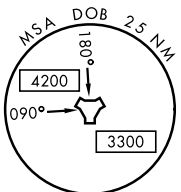
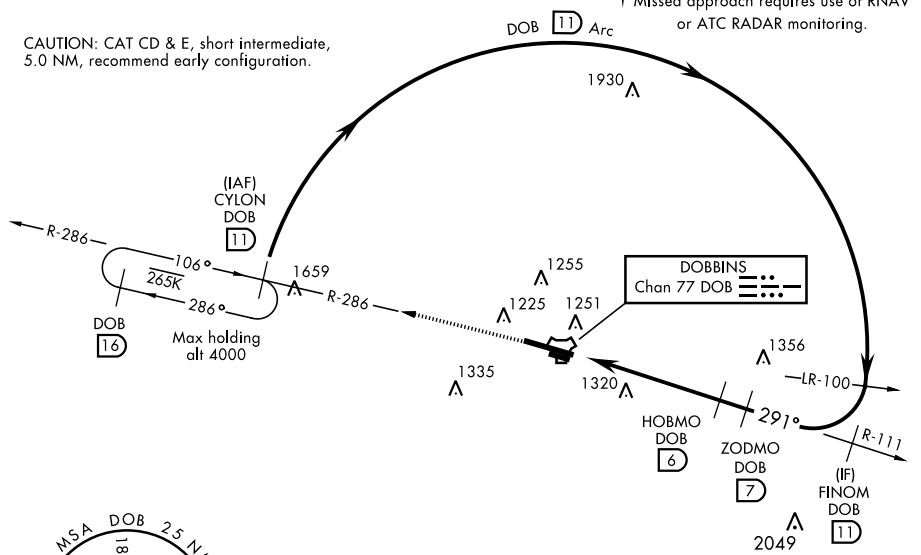


† MISSED APPROACH: Climb to 3000 via DOB R-286 to CYLON and hold.

ATIS ★ 269.5	ATLANTA APP CON 121.0 268.7	DOBBINS TOWER ★ 120.75 370.875	GND CON 125.3 275.8	ASR
---------------------	------------------------------------	---------------------------------------	----------------------------	-----

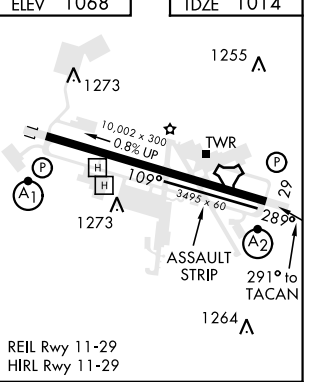
CAUTION: CAT CD & E, short intermediate, 5.0 NM, recommend early configuration.

† Missed approach requires use of RNAV or ATC RADAR monitoring.



EMERG SAFE ALT 100 NM 7700

	3000 ↑ DOB R-286	CYLON DOB DOB 11	VGSI and descent angle not coincident.	ZODMO DOB 7	FINOM R-111 DOB 11	CYLON R-286 DOB 11	ELEV 1068	TDZE 1014
CATEGORY	A	B	C	D	E			
S-29*	1580/40	566 (600-¾)	1580-1¾	566	(600-1¾)			
CIRCLING**	1660-1	592 (600-1)	1700-1¾ 632 (700-1¾)	1700-2 632 (700-2)	1700-2¼ 632 (700-2¼)			



TACAN RWY 29

SE-4, 12 SEP 2019 to 10 OCT 2019

SE-4, 12 SEP 2019 to 10 OCT 2019