

WAAS CH <b>86305</b> <b>W22A</b>	APP CRS <b>224°</b>	Rwy Idg TDZE Apt Elev	<b>5200</b> <b>83</b> <b>83</b>
--	------------------------	-----------------------------	---------------------------------------

# RNAV (GPS) RWY 22

HANCOCK COUNTY-BAR HARBOR (BHB)

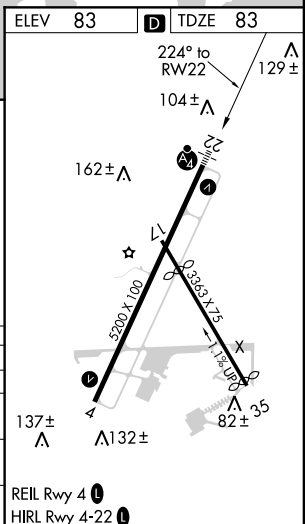
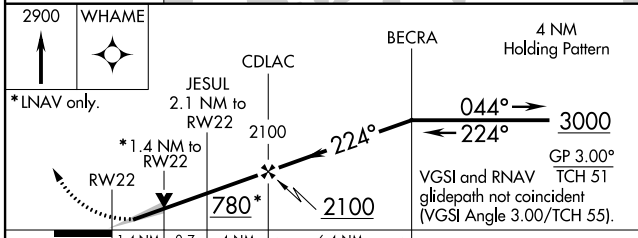
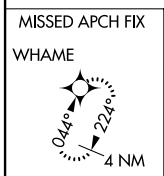
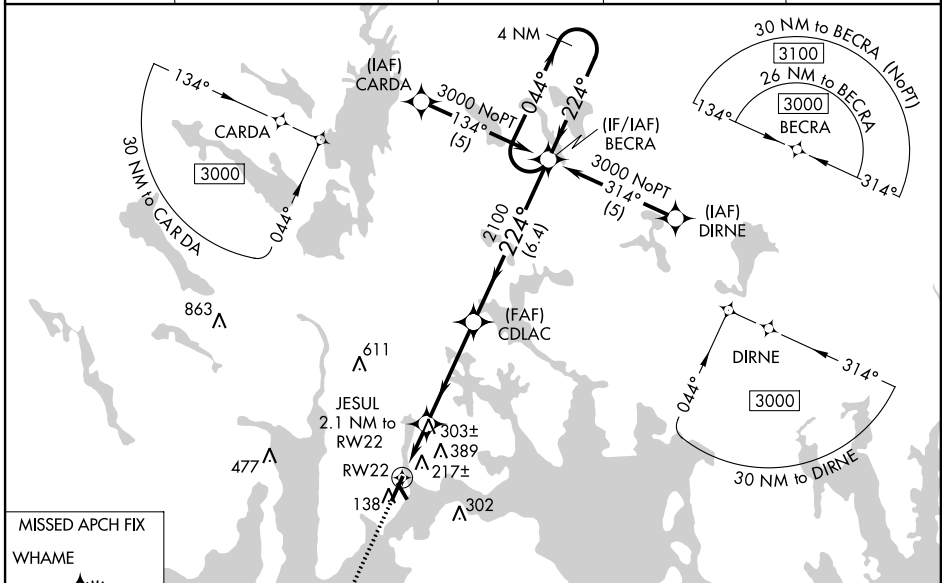
**⚠** Baro-VNAV NA when using Bangor altimeter setting. DME/DME RNP-0.3 NA. When local altimeter setting not received, use Bangor altimeter setting and increase all DA 83 feet and all MDA 100 feet; increase LPV all Cats and LNAV/VNAV all Cats and LNAV Cats C/D and Circling Cats C/D visibilities ¼ mile. VDP NA with Bangor altimeter setting. Inoperative table does not apply to LNAV/VNAV all Cats and LNAV Cat C. When using Bangor altimeter setting, inoperative table does not apply to LNAV/VNAV all Cats and LNAV Cat C. For uncompensated Baro-VNAV systems, LNAV/VNAV NA below -15°C (5°F) or above 49°C (120°F). Circling to Rwy 17 NA at night.

MALSF



**MISSED APPROACH:**  
Climb to 2900 direct WHAME and hold.

AWOS-3PT <b>118.35</b>	BANGOR APP CON <b>133.6 284.65</b>	CLNC DEL <b>119.9</b>	UNICOM <b>123.0</b> (CTAF)	<b>122.7</b> <b>0</b>
---------------------------	---------------------------------------	--------------------------	-------------------------------	-----------------------



CATEGORY	A	B	C	D
LPV DA		283-¾	200 (200-¾)	
LNAV/VNAV DA		697-2¼	614 (700-2¼)	
LNAV MDA	580-¾ 497 (500-¾)	580-1¼ 497 (500-1¼)	580-1½ 497 (500-1½)	
CIRCLING	600-1 517 (600-1)	620-1 537 (600-1)	700-1¾ 617 (700-1¾)	700-2 617 (700-2)

NE-1, 12 SEP 2019 to 10 OCT 2019

NE-1, 12 SEP 2019 to 10 OCT 2019