

WAAS CH 65900 W04A	APP CRS 044°	Rwy Idg TDZE 83 Apt Elev 83	5200
--	------------------------	---	-------------

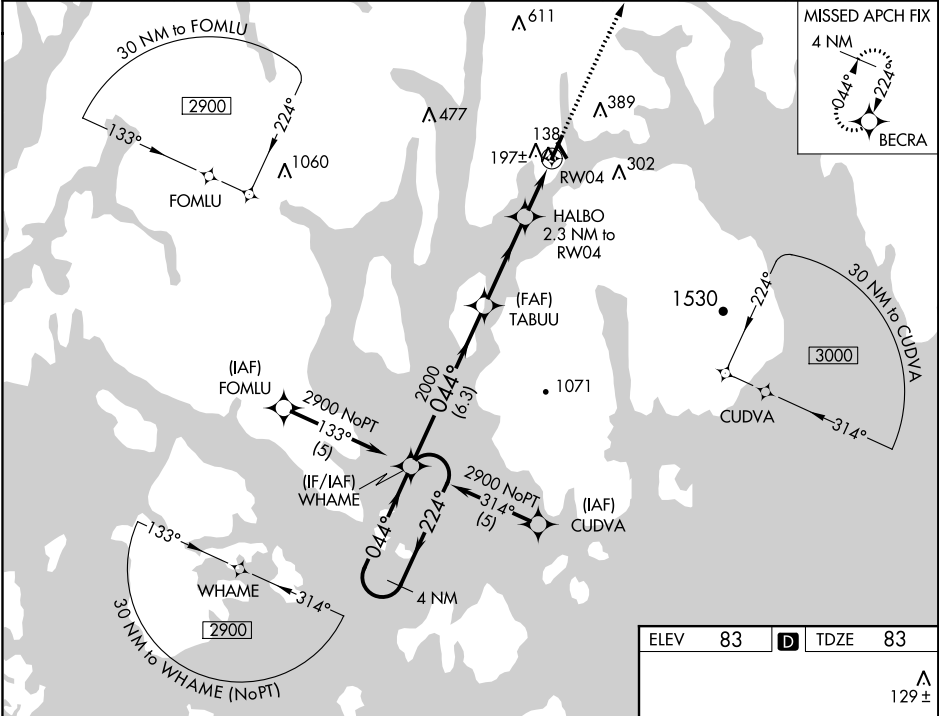
RNAV (GPS) RWY 4

HANCOCK COUNTY-BAR HARBOR (BHB)

⚠ Baro-VNAV NA when using Bangor altimeter setting. For uncompensated Baro-VNAV systems, LNAV/VNAV NA below -15°C (5°F) or above 49°C (120°F). DME/DME RNP-0.3 NA. When local altimeter setting not received, use Bangor altimeter setting and increase all DA 83 feet and all MDA 100 feet; increase LPV all Cats visibility ¼ mile; increase LNAV/VNAV all Cats ½ mile; increase LNAV Cats C/D and Circling Cats C/D visibilities ¼ mile. Night Landing: Rwy 17 NA, Rwy 4 Cat C/D NA at night. Helicopter visibility reduction below 1 SM not authorized.

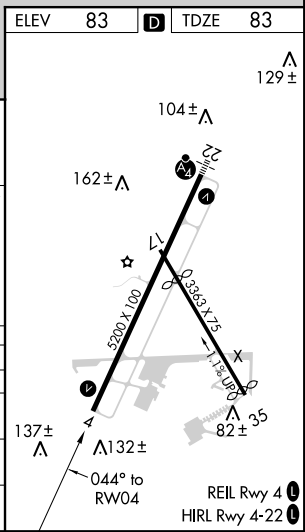
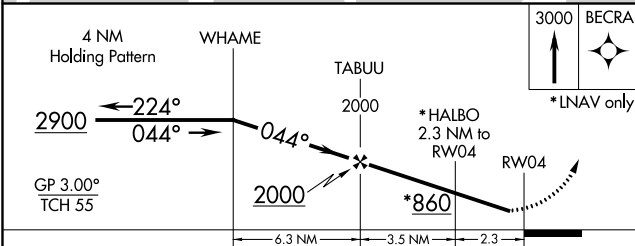
MISSED APPROACH:
Climb to 3000 direct BECRA and hold.

AWOS-3PT 118.35	BANGOR APP CON 133.6 284.65	CLNC DEL 119.9	UNICOM 123.0 (CTAF)	122.7 ⓪
---------------------------	---------------------------------------	--------------------------	-------------------------------	-----------------------



NE-1, 12 SEP 2019 to 10 OCT 2019

NE-1, 12 SEP 2019 to 10 OCT 2019



CATEGORY	A	B	C	D
LPV DA		333-1	250 (300-1)	
LNAV/VNAV DA		464-1¼	381 (400-1¼)	
LNAV MDA	480-1	397 (400-1)		480-1¼ 397 (400-1¼)
CIRCLING	600-1 517 (600-1)	620-1 537 (600-1)	700-1¾ 617 (700-1¾)	700-2 617 (700-2)