

| | | | |
|---|------------------------|--|-------------|
| LOC I-ESF 111.5 Chan 52 | APP CRS 270° | Rwy Idg TDZE 92 Apt Elev 112 | 5999 |
|---|------------------------|--|-------------|

ILS or LOC/DME RWY 27

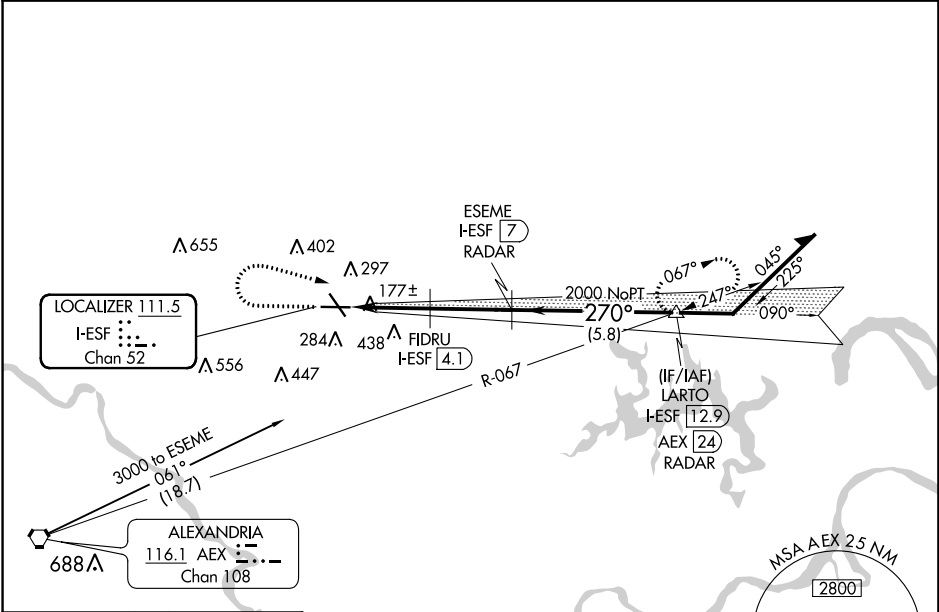
ESLER RGNL (ESF)

When VGSi inop, Circling Rwy 14-32 NA at night. DME or Radar required. VDP NA with Alexandria Intl altimeter setting. When local altimeter setting not received, use Alexandria Intl altimeter setting and increase all DA 35 feet and all MDA 40 feet. For inoperative MALSR, increase S-LOC 27 Cat C/D visibility to 1½ mile.

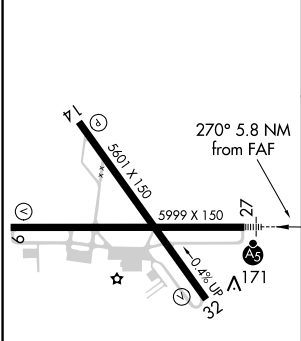
MALSR
AS

MISSED APPROACH: Climb to 1500 then climbing right turn to 3000 on heading 120° and on AEX VORTAC R-067 to LARTO/AEX 24.1 DME/RADAR and hold.

| | |
|---|--------------------------------------|
| POLK APP CON 125.4 254.8 | UNICOM 122.8 (CTAF) |
|---|--------------------------------------|



| | | |
|-----------------|----------|----------------|
| ELEV 112 | D | TDZE 92 |
|-----------------|----------|----------------|



| | | | | | |
|------------|------|------------|------------------------|-----------------------|---------------------|
| 1500 | 3000 | AEX R-067 | LARTO AEX [24.1] RADAR | ESEME I-ESF [7] RADAR | Remain within 10 NM |
| *LOC only. | | | | | |
| *I-ESF 1.2 | | *I-ESF 2.1 | FIDRU I-ESF 4.1 | 2000 | 2500 |
| -0.9 | | -2 NM | -2.9 NM | 2000 | GS 3.00° TCH 59 |

| CATEGORY | A | B | C | D |
|----------|-------------------|---------------------|---|-------------------|
| S-ILS 27 | 292-½ 200 (200-½) | | | |
| S-LOC 27 | 440-½ 348 (400-½) | 440-⅝ 348 (400-⅝) | | |
| CIRCLING | 600-1 488 (500-1) | 600-1½ 488 (500-1½) | | 740-2 628 (700-2) |

REIL Rws 9, 14 and 32
MIRL Rwy 14-32
HIRL Rwy 9-27

SC-4, 12 SEP 2019 to 10 OCT 2019

SC-4, 12 SEP 2019 to 10 OCT 2019