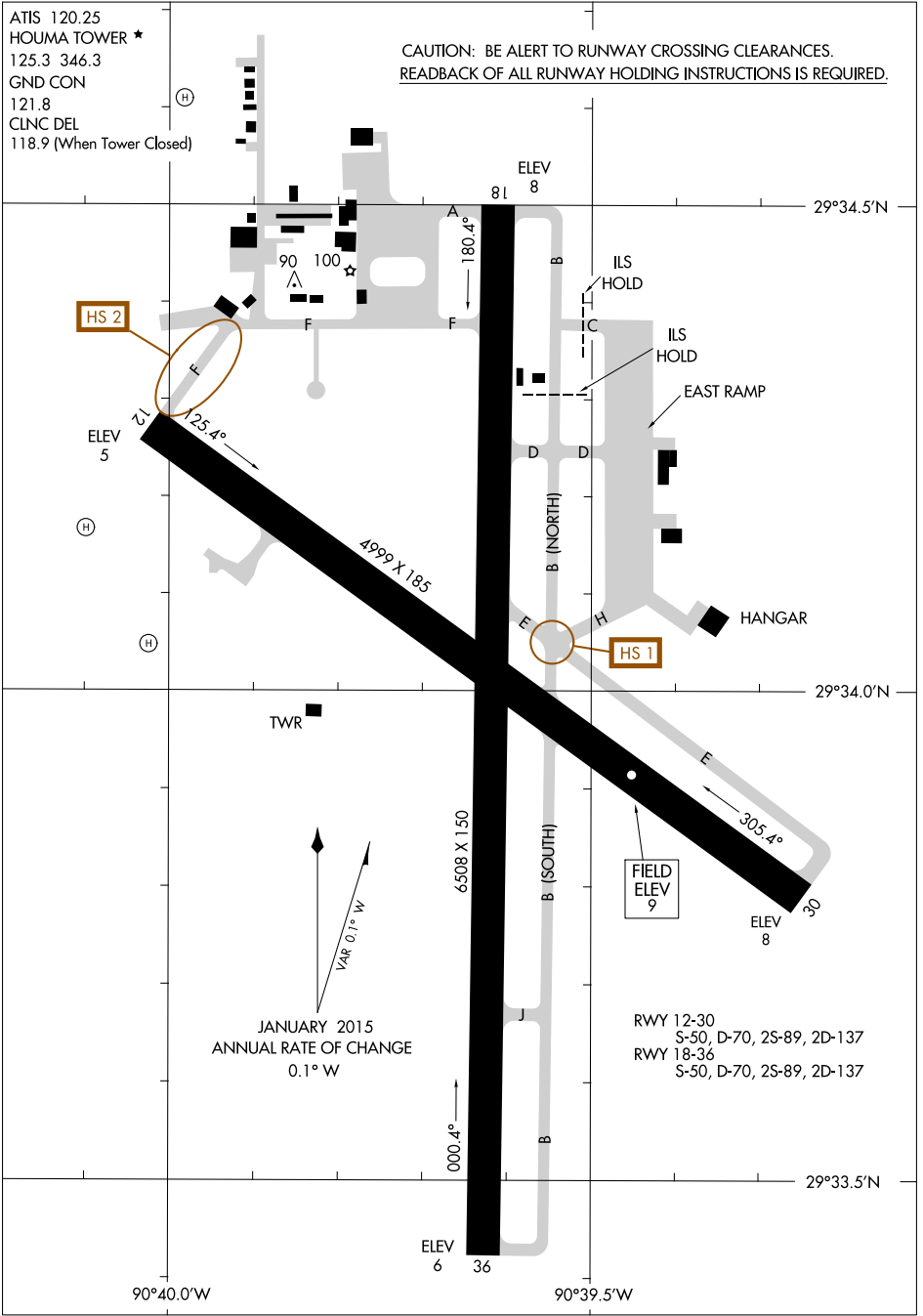


ATIS 120.25
 HOUMA TOWER ★
 125.3 346.3
 GND CON
 121.8
 CLNC DEL
 118.9 (When Tower Closed)

CAUTION: BE ALERT TO RUNWAY CROSSING CLEARANCES.
READBACK OF ALL RUNWAY HOLDING INSTRUCTIONS IS REQUIRED.



SC-4, 12 SEP 2019 to 10 OCT 2019

SC-4, 12 SEP 2019 to 10 OCT 2019

RWY 12-30
 S-50, D-70, 2S-89, 2D-137
 RWY 18-36
 S-50, D-70, 2S-89, 2D-137

TWR
 VAR 0.1° W
 JANUARY 2015
 ANNUAL RATE OF CHANGE
 0.1° W