

VOR/DME TBD <b>112.0</b> Chan <b>57</b>	APP CRS <b>121°</b>	Rwy Idg <b>4999</b> TDZE <b>9</b> Apt Elev <b>10</b>
---	------------------------	--

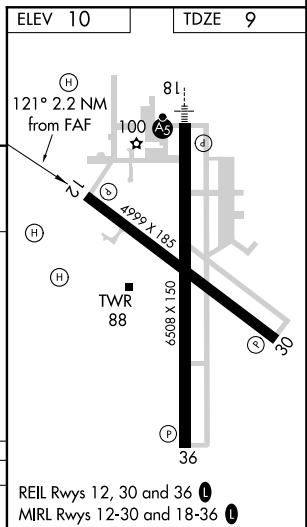
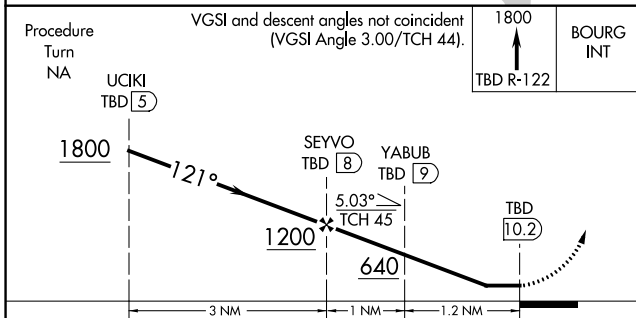
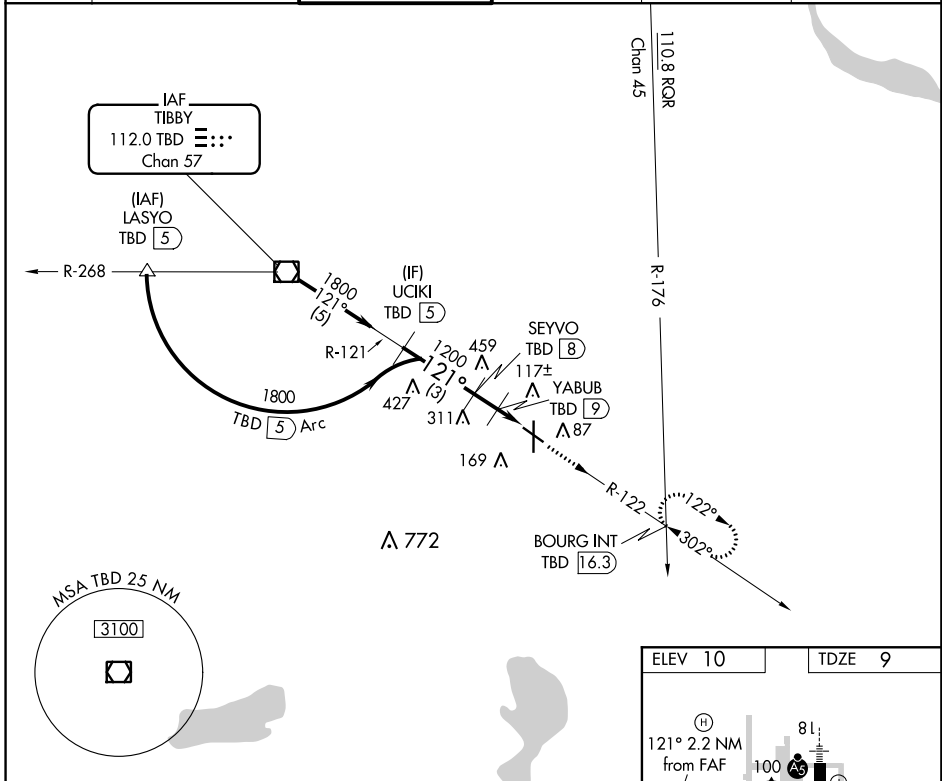
# COPTER VOR/DME RWY 12

HOUMA-TERREBONNE (HUM)

**⚠** When local altimeter setting not received, use Louis Armstrong New Orleans Intl altimeter setting and increase MDA 80 feet.

MISSED APPROACH: Climb to 1800 via TBD VOR/DME R-122 to BOURG INT/16.3 DME and hold.

ATIS <b>120.25</b>	NEW ORLEANS APP CON <b>118.9 350.35</b>	HOUMA TOWER ★ <b>125.3 (CTAF) 0 346.3</b>	GND CON <b>121.8</b>	CLNC DEL <b>118.9</b> (when tower closed)	UNICOM <b>122.95</b>
-----------------------	--	--	-------------------------	---	-------------------------



CATEGORY	COPTER	B	C	D
H-12	440- <sup>3</sup> / <sub>4</sub> 431 (500- <sup>3</sup> / <sub>4</sub> )		NA	

SC-4, 12 SEP 2019 to 10 OCT 2019

SC-4, 12 SEP 2019 to 10 OCT 2019