

WAAS CH 56313 W12A	APP CRS 124°	Rwy Idg TDZE Apt Elev	4999 9 10
--	------------------------	-----------------------------	--------------------------------------

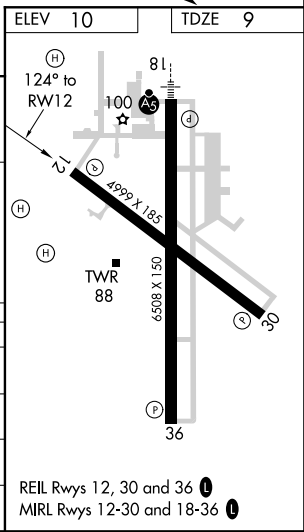
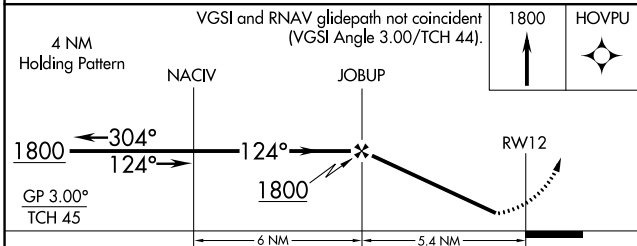
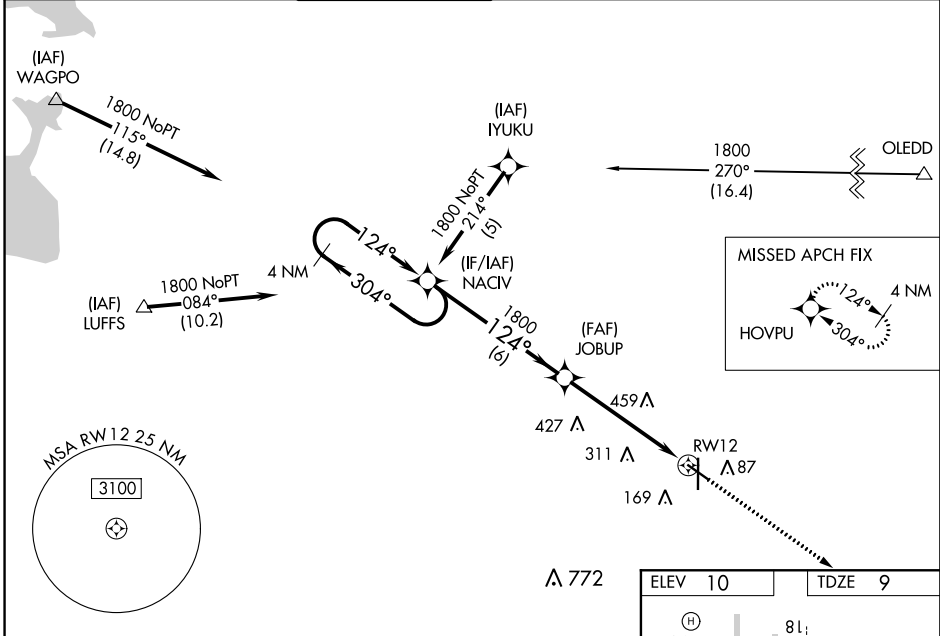
RNAV (GPS) RWY 12

HOUMA-TERREBONNE (HUM)

⚠ For uncompensated Baro-VNAV systems, LNAV/VNAV NA below -15°C (5°F) or above 49°C (120°F). DME/DME RNP-0.3 NA. Visibility reduction by helicopters NA.
⚠ When local altimeter setting not received, use Louis Armstrong New Orleans Intl altimeter setting and increase all DA 77 feet and all MDA 80 feet, increase LPV and LNAV/VNAV all Cats and LNAV and Circling Cat B/C/D visibility ¼ mile. Baro-VNAV NA when using Louis Armstrong New Orleans Intl altimeter setting.

MISSED APPROACH: Climb to 1800 direct HOVPU and hold.

ATIS 120.25	NEW ORLEANS APP CON 118.9 350.35	HOUMA TOWER ★ 125.3 (CTAF) 0 346.3	GND CON 121.8	CLNC DEL 118.9 (when tower closed)	UNICOM 122.95
-----------------------	--	--	-------------------------	---	-------------------------



CATEGORY	A	B	C	D
LPV DA	294-1 285 (300-1)			
LNAV/VNAV DA	491-1¾ 482 (500-1¾)			
LNAV MDA	680-1 671 (700-1)	680-2 671 (700-2)	680-2½ 671 (700-2½)	680-2½ 671 (700-2½)
CIRCLING	680-1 670 (700-1)	680-2 670 (700-2)	680-2½ 670 (700-2½)	680-2½ 670 (700-2½)

SC-4, 12 SEP 2019 to 10 OCT 2019

SC-4, 12 SEP 2019 to 10 OCT 2019