

WAAS CH 61013 W30A	APP CRS 304°	Rwy Idg TDZE Apt Elev	4999 10 10
--	------------------------	-----------------------------	---------------------------------------

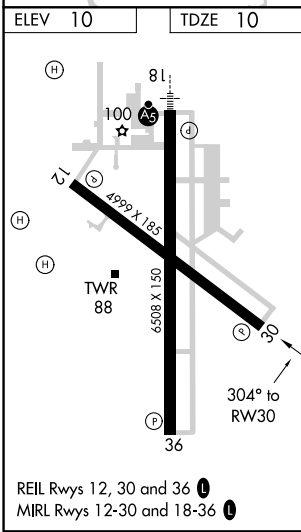
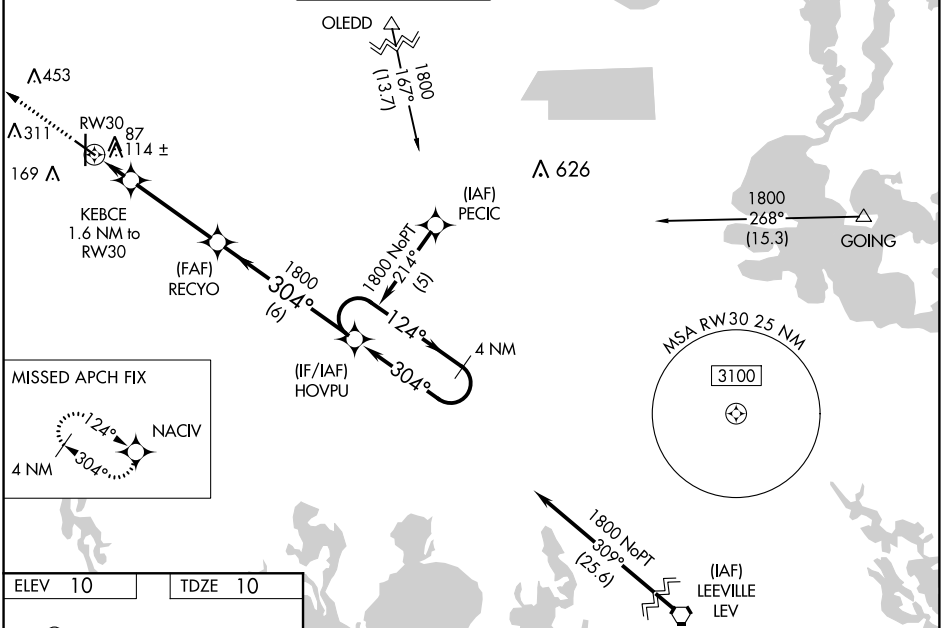
RNAV (GPS) RWY 30

HOUMA-TERREBONNE (HUM)

▼ For uncompensated Baro-VNAV systems, LNAV/VNAV NA below -15°C (5°F) or above 49°C (120°F). DME/DME RNP-0.3 NA. Visibility reduction by helicopters NA.
▲ When local altimeter setting not received, use Louis Armstrong New Orleans Intl altimeter setting and increase all DA 77 feet and all MDA 80 feet, increase LPV and LNAV/VNAV all Cats, LNAV Cat C/D, and Circling Cat D visibility ¼ mile. Baro-VNAV NA when using Louis Armstrong New Orleans Intl altimeter setting.

MISSED APPROACH: Climb to 1800 direct NACIV and hold.

ATIS 120.25	NEW ORLEANS APP CON 118.9 350.35	HOUMA TOWER ★ 125.3 (CTAF) 0 346.3	GND CON 121.8	CLNC DEL 118.9 (when tower closed)	UNICOM 122.95
-----------------------	--	--	-------------------------	---	-------------------------



1800	NACIV	VGSi and RNAV glidepath not coincident (VGSi Angle 3.00°/TCH 39).		4 NM
↑	✧			Holding Pattern
* LNAV only		KEBCE 1.6 NM to RWY 30	RECYO	HOVPU
RWY 30		1800	304°	1800
*560		1800	304°	1800
1.6 NM		3.8 NM	6 NM	GP 3.00° TCH 45
CATEGORY	A	B	C	D
LPV DA	260-1		250 (300-1)	
LNAV/VNAV DA	413-1½		403 (500-1½)	
LNAV MDA	380-1		370 (400-1)	
			380-1¼ 370 (400-1¼)	
CIRCLING	480-1	470 (500-1)	480-1½ 470 (500-1½)	620-2 610 (700-2)

SC-4, 12 SEP 2019 to 10 OCT 2019

SC-4, 12 SEP 2019 to 10 OCT 2019