

WAAS CH <b>56413</b> <b>W36A</b>	APP CRS <b>359°</b>	Rwy Idg <b>6508</b> TDZE <b>9</b> Apt Elev <b>10</b>
--	------------------------	--

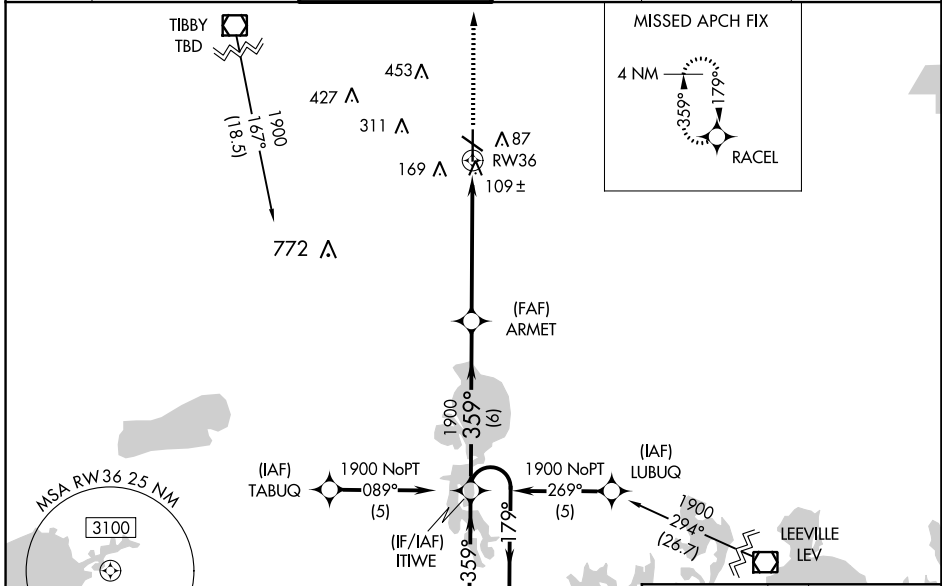
# RNAV (GPS) RWY 36

HOUMA-TERREBONNE (HUM)

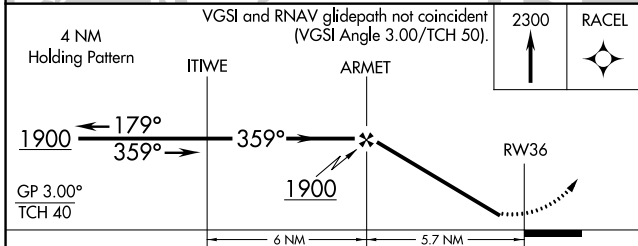
**⚠** Baro-VNAV NA when using Louis Armstrong New Orleans Intl altimeter setting.  
 For uncompensated Baro-VNAV systems, LNAV/VNAV NA below -15°C (5°F) or above 49°C (120°F). DME/DME RNP-0.3 NA. Visibility reduction by helicopters NA. When local altimeter setting not received, use Louis Armstrong New Orleans Intl altimeter setting and increase all DA 77 feet and LPV and LNAV/VNAV all Cats visibility ¼ mile, increase all MDA 80 feet, LNAV Cats C/D visibility ¼ mile and Circling Cat D visibility ¼ mile.

MISSED APPROACH: Climb to 2300 direct RACEL and hold.

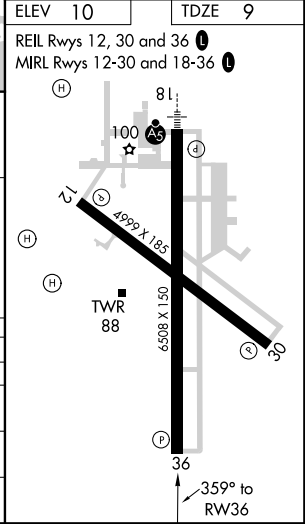
ATIS <b>120.25</b>	NEW ORLEANS APP CON <b>118.9 350.35</b>	HOUMA TOWER ★ <b>125.3 (CTAF) 0 346.3</b>	GND CON <b>121.8</b>	CLNC DEL <b>118.9</b> (when tower closed)	UNICOM <b>122.95</b>
-----------------------	--	--	-------------------------	---	-------------------------



ELEV 10	TDZE 9
REIL Rwy 12, 30 and 36	
MIRL Rwy 12-30 and 18-36	



CATEGORY	A	B	C	D
LPV DA		332-1¼	323 (400-1¼)	
LNAV/VNAV DA		442-1½	433 (500-1½)	
LNAV MDA	460-1	451 (500-1)	460-1¼ 451 (500-1¼)	460-1½ 451 (500-1½)
CIRCLING	480-1	470 (500-1)	480-1½ 470 (500-1½)	620-2 610 (700-2)



SC-4, 12 SEP 2019 to 10 OCT 2019

SC-4, 12 SEP 2019 to 10 OCT 2019