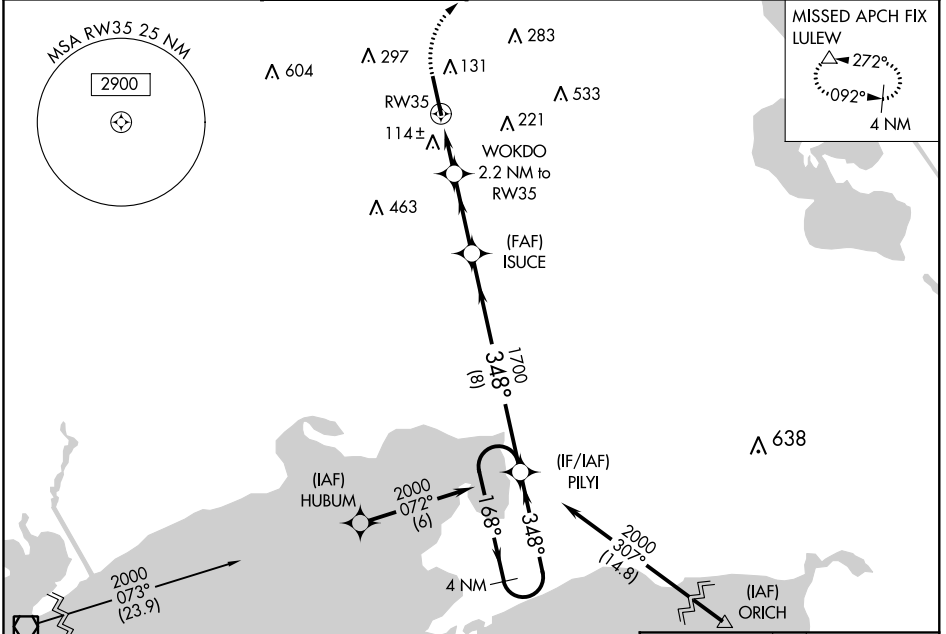


WAAS CH 40301 W35A	APP CRS 348°	Rwy Idg TDZE 21 Apt Elev 24	8002
--	------------------------	---	-------------

RNAV (GPS) RWY 35

ACADIANA RGNL (A.R.A.)

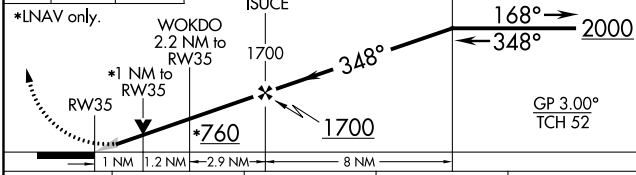
RNP APCH.				MALSR		MISSED APPROACH: Climb to 440 then climbing right turn to 2000 direct LULEW and hold.	
▼ For uncompensated Baro-VNAV systems, LNAV/VNAV NA below -3°C or above 54°C. For inop ALS, increase LNAV/VNAV all Cats visibility to ½ SM and LNAV Cats C/D visibility to 1 SM. Circling NA to Rwy 17W and 35W.				ASOS 133.325		LAFAYETTE APP CON* 121.1 268.7	
ACADIANA TOWER* 125.0 (CTAF) 0 239.3		GND CON 121.7		CLNC DEL 121.7 118.05 (when twr closed)		UNICOM 122.95	
						0* 122.7	



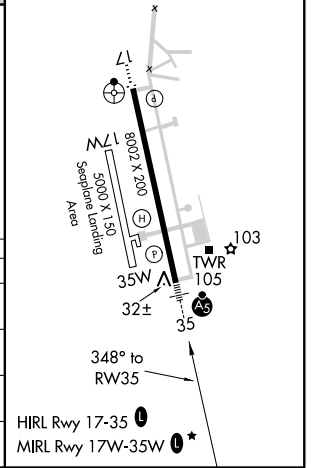
WHITE LAKE LLA

ELEV 24	D	TDZE 21
----------------	----------	----------------

440 2000 LULEW VGSI and RNAV glidepath not coincident (VGSI Angle 3.00/TCH 52). 4 NM Holding Pattern



CATEGORY	A	B	C	D
LPV DA		221-½	200 (200-½)	
LNAV/DA		303-½	282 (300-½)	
LNAV MDA	380-½	359 (400-½)	380-¾	359 (400-¾)
C CIRCLING	440-1 416 (500-1)	480-1 456 (500-1)	600-1½ 576 (600-1½)	680-2 656 (700-2)



SC-4, 12 SEP 2019 to 10 OCT 2019

SC-4, 12 SEP 2019 to 10 OCT 2019