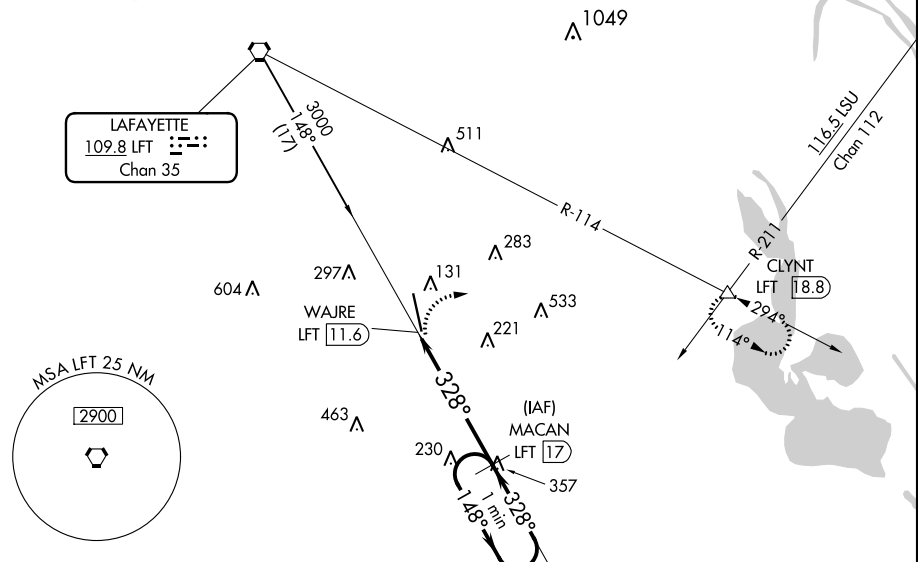


VORTAC LFT 109.8	APP CRS 328°	Rwy Idg 8002	TDZE 21
Chan 35		Apt Elev 24	

VOR RWY 35
ACADIANA RGNL (A.R.A.)

<p>▽ ▲ Circling NA to Rwy's 17W and 35W. DME required. Inop table does not apply.</p>		<p>MALSR </p>	<p>MISSED APPROACH: Climbing right turn to 2000 on heading 080° and LFT R-114 to CLYNT INT/LFT 18.8 DME and hold.</p>			
ASOS 133.325	LAFAYETTE APP CON* 121.1 268.7	ACADIANA TOWER* 125.0 (CTAF) 0 239.3	GND CON 121.7	CLNC DEL 121.7 118.05 (when twr closed)	UNICOM 122.95	0* 122.7

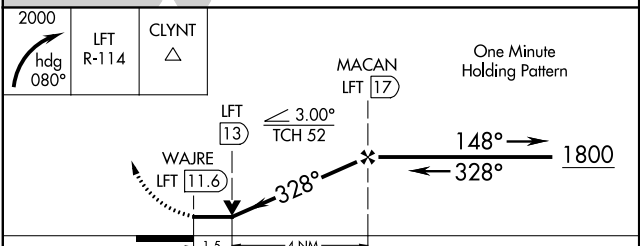
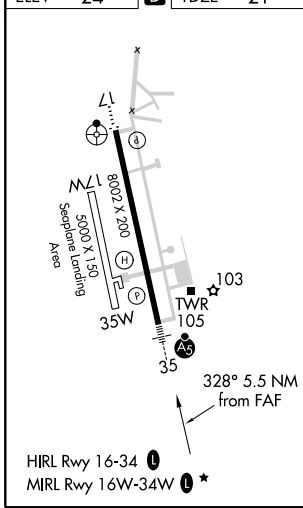
DME REQUIRED



SC-4, 12 SEP 2019 to 10 OCT 2019

SC-4, 12 SEP 2019 to 10 OCT 2019

ELEV 24	D	TDZE 21
---------	----------	---------



CATEGORY	A	B	C	D	E
S-35	540-1/2	519 (600-1/2)	540-1 3/8	519 (600-1 3/8)	
C CIRCLING	540-1	516 (600-1)	600-1 1/2 576 (600-1 1/2)	680-2 656 (700-2)	900-3 876 (900-3)