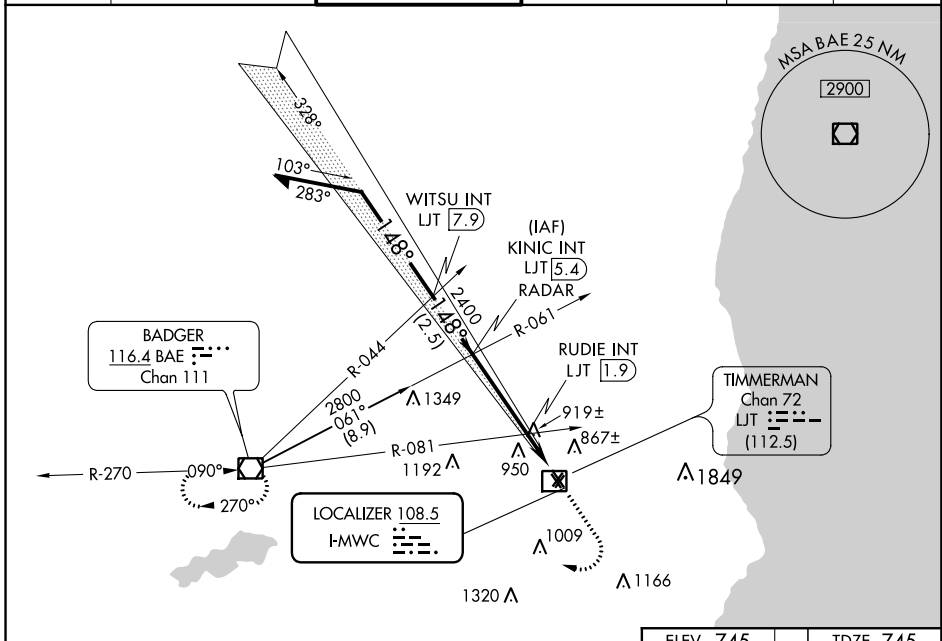


LOC I-MWC 108.5	APP CRS 148°	Rwy Idg TDZE Apt Elev	4103 745 745
---------------------------	------------------------	-----------------------------	---

LOC RWY 15L

LAWRENCE J TIMMERMAN (MWC)

<p>▼ Circling NA to Rwys 4R, 15R, 22L and 33L. Rwy 15L helicopter visibility reduction below 3/4 SM NA. # Simultaneous reception of I-MWC and LJT DME required.</p>		<p>MISSED APPROACH: Climb to 3000 then right turn direct BAE VOR/DME and hold.</p>	
ATIS 128.3	MILWAUKEE APP CON 125.35 307.0	TIMMERMAN TOWER ★ 120.5 (CTAF) ①	MILWAUKEE CLNC DEL 121.7 (when tower closed)
		GND CON 121.7	UNICOM 122.95



*1320 when using General Mitchell Intl altimeter setting. Remain within 10 NM

KINIC INT LJT 5.4 RADAR

3000 BAE

2800 WITSU INT LJT 7.9

2700 RUDIE INT LJT 1.9

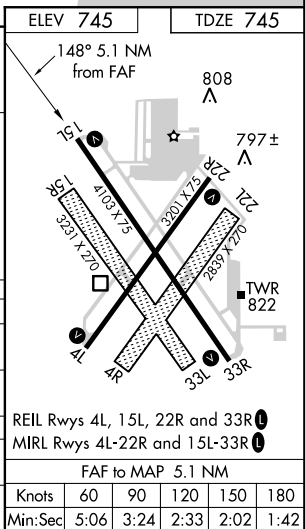
2400

3.01° TCH 41

*1280

2.5 NM 3.5 NM 1.6 NM

CATEGORY	A	B	C	D
S-LOC 15L	1280-1	535 (600-1)	1280-1½	535 (600-1½)
CIRCLING	1280-1 535 (600-1)	1340-1 595 (600-1)	1340-1½ 595 (600-1½)	1340-2 595 (600-2)
RUDIE FIX MINIMUMS (DUAL VOR RECEIVERS OR DME REQUIRED #)				
S-LOC 15L	1180-1	435 (500-1)	1180-1¼	435 (500-1¼)
CIRCLING	1220-1 475 (500-1)	1340-1 595 (600-1)	1340-1½ 595 (600-1½)	1340-2 595 (600-2)



EC-3, 12 SEP 2019 to 10 OCT 2019

EC-3, 12 SEP 2019 to 10 OCT 2019