

WAAS CH <b>90520</b> <b>W04A</b>	APP CRS <b>038°</b>	Rwy Idg TDZE Apt Elev	<b>3201</b> <b>738</b> <b>745</b>
--	------------------------	-----------------------------	---

# RNAV (GPS) RWY 4L

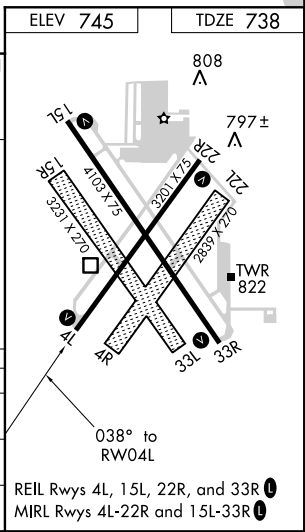
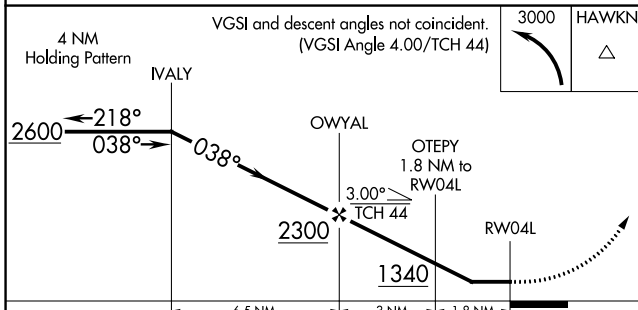
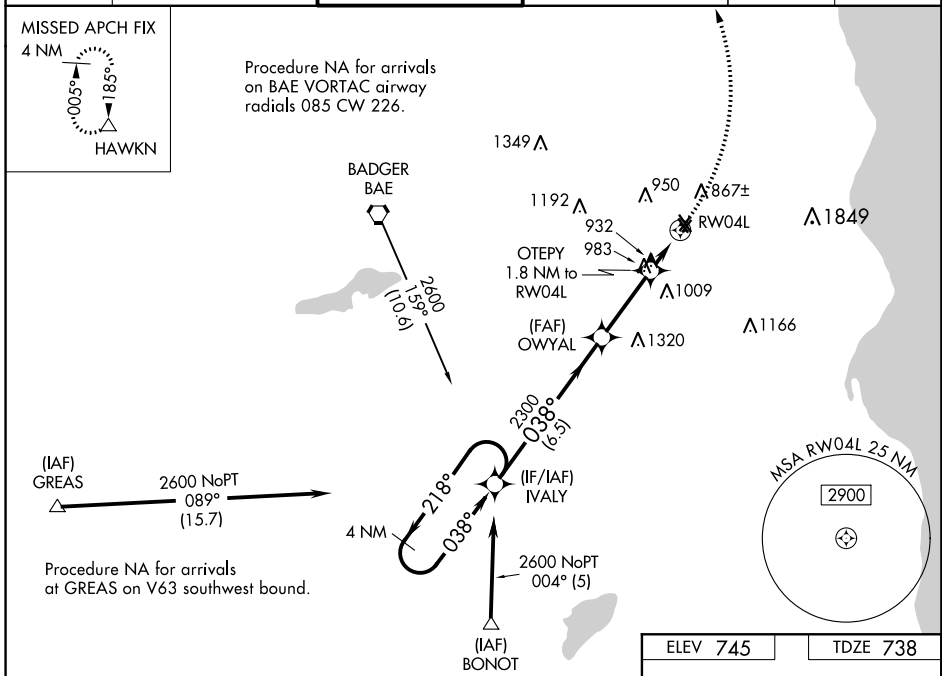
LAWRENCE J TIMMERMAN (MWC)

RNP APCH

▼ When local altimeter setting not received, use General Mitchell Intl altimeter setting and increase all MDA 40 feet, LP Cat C and D visibility ¼ mile, LNAV Cat C and D visibility ½ mile, and Circling Cat C visibility ¾ mile. Rwy 4L helicopter visibility reduction below ¾ SM NA. Circling NA to Rws 4R, 15R, 22L, and 33L.

MISSED APPROACH:  
Climbing left turn to 3000 direct HAWKN and hold.

ATIS <b>128.3</b>	MILWAUKEE APP CON <b>125.35 307.0</b>	TIMMERMAN TOWER ★ <b>120.5</b> (CTAF) <b>0</b>	MILWAUKEE CLNC DEL <b>121.7</b> (when tower closed)	GND CON <b>121.7</b>	UNICOM <b>122.95</b>
----------------------	--	---	---	-------------------------	-------------------------



CATEGORY	A	B	C	D
LP MDA	1240-1	502 (500-1)	1240-1 $\frac{3}{8}$	502 (500-1 $\frac{3}{8}$ )
LNAV MDA	1300-1	562 (600-1)	1300-1 $\frac{5}{8}$	562 (600-1 $\frac{5}{8}$ )
CIRCLING	1300-1 555 (600-1)	1340-1 595 (600-1)	1340-1 $\frac{5}{8}$ 595 (600-1 $\frac{5}{8}$ )	1340-2 595 (600-2)

EC-3, 12 SEP 2019 to 10 OCT 2019

EC-3, 12 SEP 2019 to 10 OCT 2019