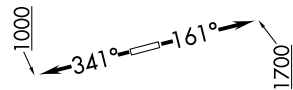


HOODO SIX DEPARTURE (RNAV)

SC-5, 12 SEP 2019 to 10 OCT 2019

CTAF
122.9
HOUSTON DEP CON
119.7 281.4

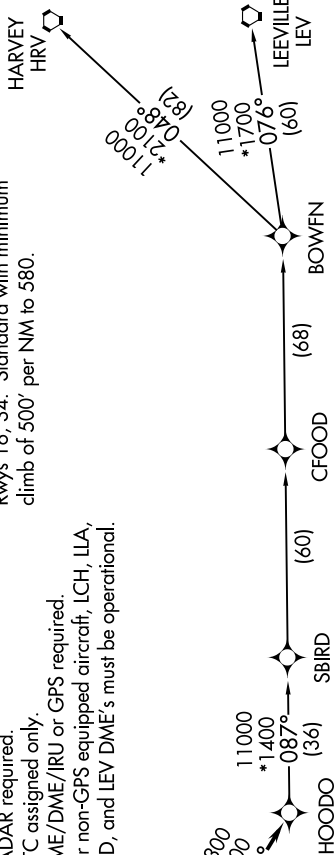


- NOTE: RNAV 1.
- NOTE: RADAR required.
- NOTE: ATC assigned only.
- NOTE: DME/DME/IRU or GPS required.
- NOTE: For non-GPS equipped aircraft, LCH, ILLA, TBD, and LEV DME's must be operational.

TAKEOFF MINIMUMS

Rwys 16, 34: Standard with minimum climb of 500' per NM to 580.

TOP ALTITUDE: ASSIGNED BY ATC



NOTE: Chart not to scale.

DEPARTURE ROUTE DESCRIPTION

TAKEOFF RWY 16: Climb heading 161° to 1700, for RADAR vectors to VUH VOR/DME, thence.

TAKEOFF RWY 34: Climb heading 341° to 1000, for RADAR vectors to VUH VOR/DME, thence.

. . . . on track 118° to HOODO, then on (transition). Maintain ATC assigned altitude. Expect filed altitude 10 minutes after departure.

BOWFN TRANSITION (HOODO6.BOWFN)

CFOOD TRANSITION (HOODO6.CFOOD)

HARVEY TRANSITION (HOODO6.HRV)

LEEVILLE TRANSITION (HOODO6.LEV)

SBIRD TRANSITION (HOODO6.SBIRD)

SC-5, 12 SEP 2019 to 10 OCT 2019