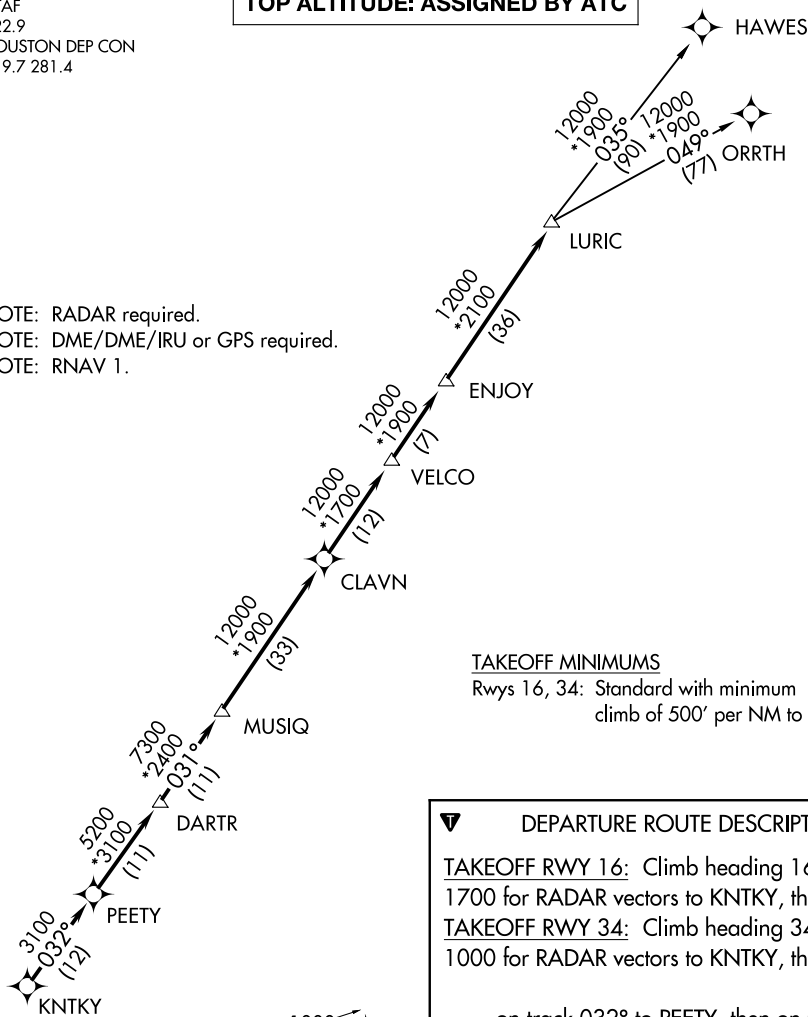


LURIC SEVEN DEPARTURE (RNAV)

CTAF
122.9
HOUSTON DEP CON
119.7 281.4

TOP ALTITUDE: ASSIGNED BY ATC

NOTE: RADAR required.
NOTE: DME/DME/IRU or GPS required.
NOTE: RNAV 1.



TAKEOFF MINIMUMS

Rwys 16, 34: Standard with minimum climb of 500' per NM to 580.

DEPARTURE ROUTE DESCRIPTION

TAKEOFF RWY 16: Climb heading 161° to 1700 for RADAR vectors to KNTKY, then ...

TAKEOFF RWY 34: Climb heading 341° to 1000 for RADAR vectors to KNTKY, then ...

... on track 032° to PEETY, then on track 032° to DARTR, then on track 031° to MUSIQ, then on track 031° to CLAVN, then on track 031° to VELCO, then on track 031° to ENJOY, then on track 031° to LURIC, then on (transition). Maintain ATC assigned altitude. Expect filed altitude 10 minutes after departure.

HAWES TRANSITION (LURIC7.HAWES)
ORRTH TRANSITION (LURIC7.ORRTH)

NOTE: Chart not to scale.