

(STYCK7.STYCK) 19115

AL-5196 (FAA)

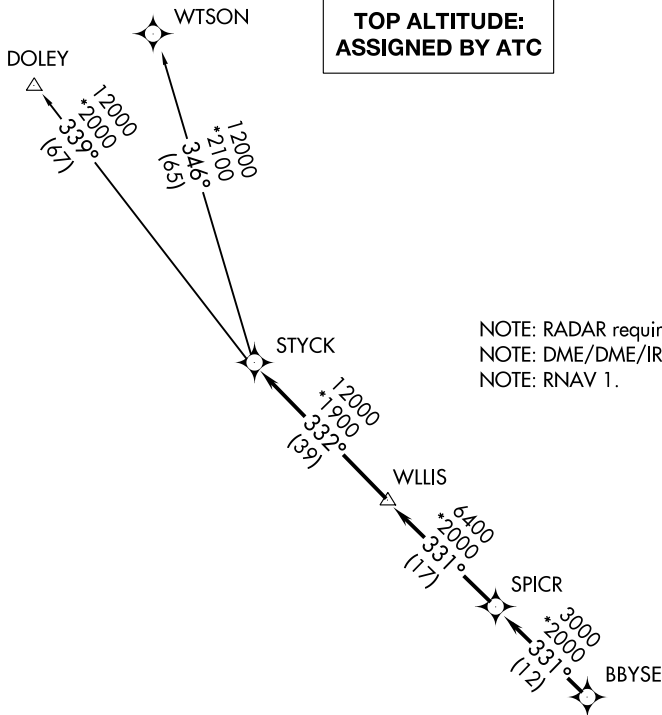
LIBERTY MUNI (T78)

STYCK SEVEN DEPARTURE (RNAV)

LIBERTY, TEXAS

**TOP ALTITUDE:
ASSIGNED BY ATC**

CTAF
122.9
HOUSTON DEP CON
119.7 281.4



NOTE: RADAR required.
NOTE: DME/DME/IRU or GPS required.
NOTE: RNAV 1.

TAKEOFF MINIMUMS

Rwys 16, 34: Standard with minimum climb of 500' per NM to 580.



NOTE: Chart not to scale.



DEPARTURE ROUTE DESCRIPTION

TAKEOFF RWY 16: Climb heading 161° to 1700 for RADAR vectors to BBYSE, thence. . . .

TAKEOFF RWY 34: Climb heading 341° to 1000 for RADAR vectors to BBYSE, thence. . . .

. . . .on track 331° to SPICR, then on track 331° to WLLIS, then on track 332° to STYCK, then on (transition). Maintain ATC assigned altitude. Expect filed altitude 10 minutes after departure.

DOLEY TRANSITION (STYCK7.DOLEY)

WTSON TRANSITION (STYCK7.WTSON)

STYCK SEVEN DEPARTURE (RNAV)

(STYCK7.STYCK) 25APR19

LIBERTY, TEXAS

LIBERTY MUNI (T78)

SC-5, 12 SEP 2019 to 10 OCT 2019

SC-5, 12 SEP 2019 to 10 OCT 2019