

VORTAC DAS 116.9 Chan 116	APP CRS 198°	Rwy Idg TDZE Apt Elev	N/A N/A 70
---	------------------------	-----------------------------	---------------------------------------

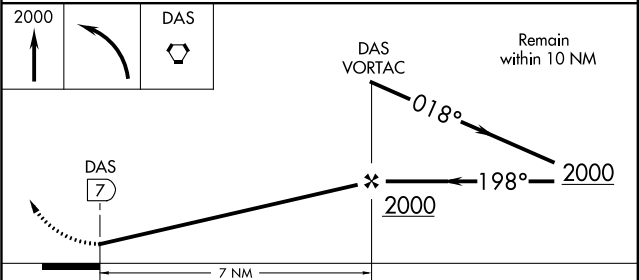
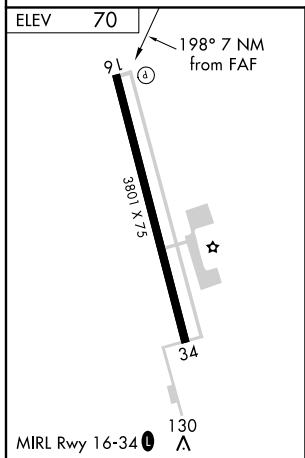
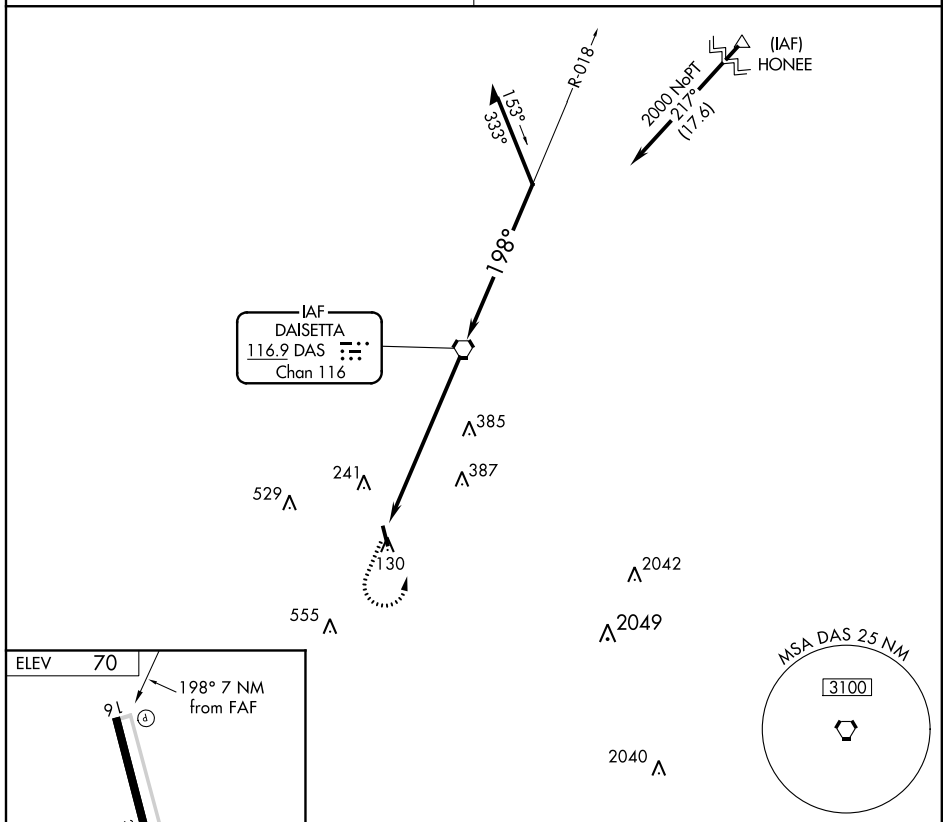
VOR-A
LIBERTY MUNI (T78)

NA Use George Bush Intercontinental/Houston altimeter setting. Procedure NA at night. Helicopter visibility reduction below 1 SM NA.

MISSED APPROACH: Climb to 2000, then left turn direct DAS VORTAC.

HOUSTON APP CON
119.7 281.4

CTAF
122.9 0



FAF to MAP 7 NM						CATEGORY	A	B	C	D
Knots	60	90	120	150	180	CIRCLING	600-1	530 (600-1)	NA	
Min:Sec	7:00	4:40	3:30	2:48	2:20					

SC-5, 12 SEP 2019 to 10 OCT 2019

SC-5, 12 SEP 2019 to 10 OCT 2019