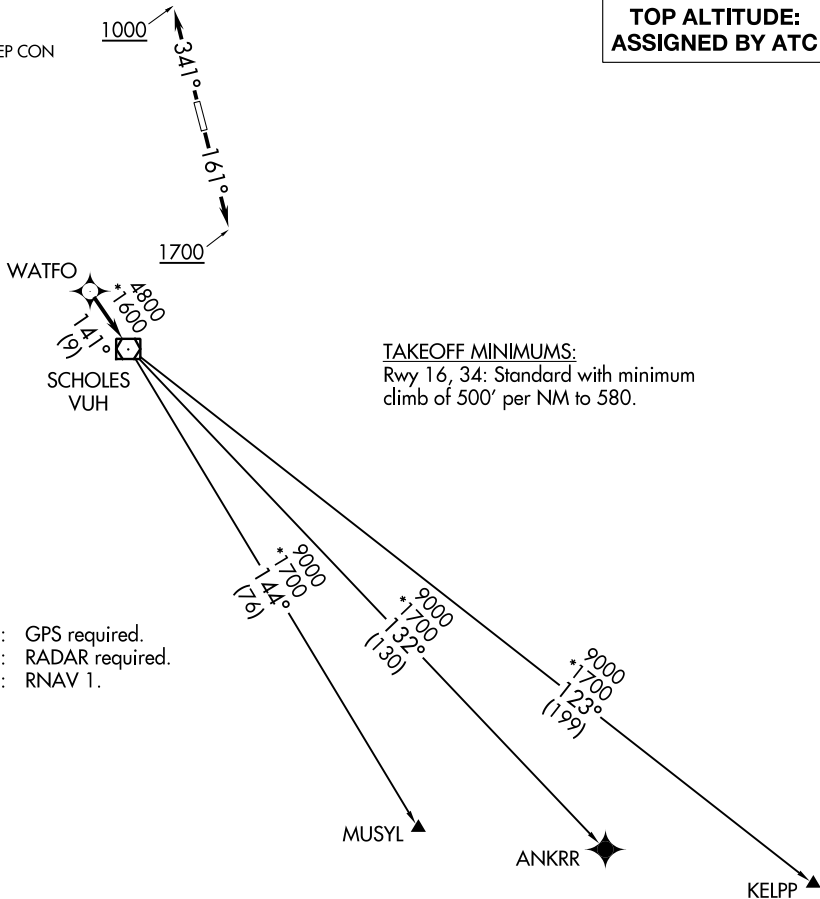


# WATFO FIVE DEPARTURE (RNAV)

CTAF  
122.9  
HOUSTON DEP CON  
119.7 281.4

**TOP ALTITUDE:  
ASSIGNED BY ATC**



TAKEOFF MINIMUMS:  
Rwy 16, 34: Standard with minimum  
climb of 500' per NM to 580.

NOTE: GPS required.  
NOTE: RADAR required.  
NOTE: RNAV 1.

NOTE: Chart not to scale.



## DEPARTURE ROUTE DESCRIPTION

TAKEOFF RWY 16: Climb on heading 161° to 1700, for RADAR vectors to WATFO, thence. . . .  
TAKEOFF RWY 34: Climb on heading 341° to 1000, for RADAR vectors to WATFO, thence. . . .

. . . .on track 141° to VUH VOR/DME, then on (transition). Maintain ATC assigned altitude.  
Expect filed altitude 10 minutes after departure.

- ANKRR TRANSITION (WATFO5.ANKRR)
- KELPP TRANSITION (WATFO5.KELPP)
- MUSYL TRANSITION (WATFO5.MUSYL)

SC-5, 12 SEP 2019 to 10 OCT 2019

SC-5, 12 SEP 2019 to 10 OCT 2019