

WYLSN SEVEN DEPARTURE (RNAV)

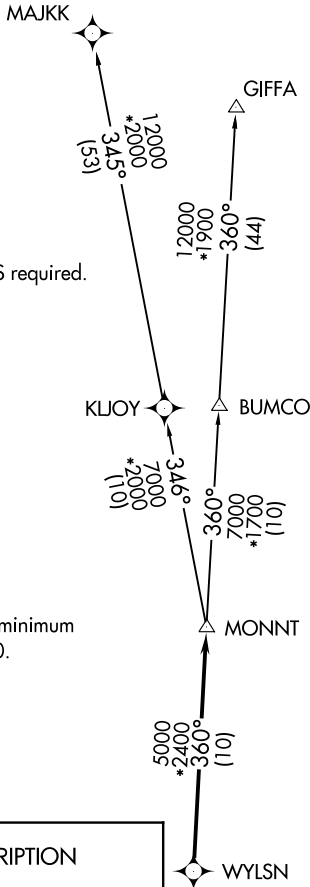
CTAF
122.9
HOUSTON DEP CON
119.7 281.4

**TOP ALTITUDE:
ASSIGNED BY ATC**

NOTE: RADAR required.
NOTE: DME/DME/IRU or GPS required.
NOTE: RNAV 1.

TAKEOFF MINIMUMS

Rwy 16, 34: Standard with minimum
climb of 500' per NM to 580.



SC-5, 12 SEP 2019 to 10 OCT 2019

SC-5, 12 SEP 2019 to 10 OCT 2019

DEPARTURE ROUTE DESCRIPTION

TAKEOFF RWY 16: Climb on heading 161° to 1700 for RADAR vectors to WYLSN, then...

TAKEOFF RWY 34: Climb on heading 341° to 1000 for RADAR vectors to WYLSN, then...

...on track 360° to MONNT, then on (transition). Maintain ATC assigned altitude. Expect filed altitude 10 minutes after departure.

GIFFA TRANSITION (WYLSN7.GIFFA)
MAJJK TRANSITION (WYLSN7.MAJKK)



NOTE: Chart not to scale.

WYLSN SEVEN DEPARTURE (RNAV)