

RNAV (GPS) RWY 9

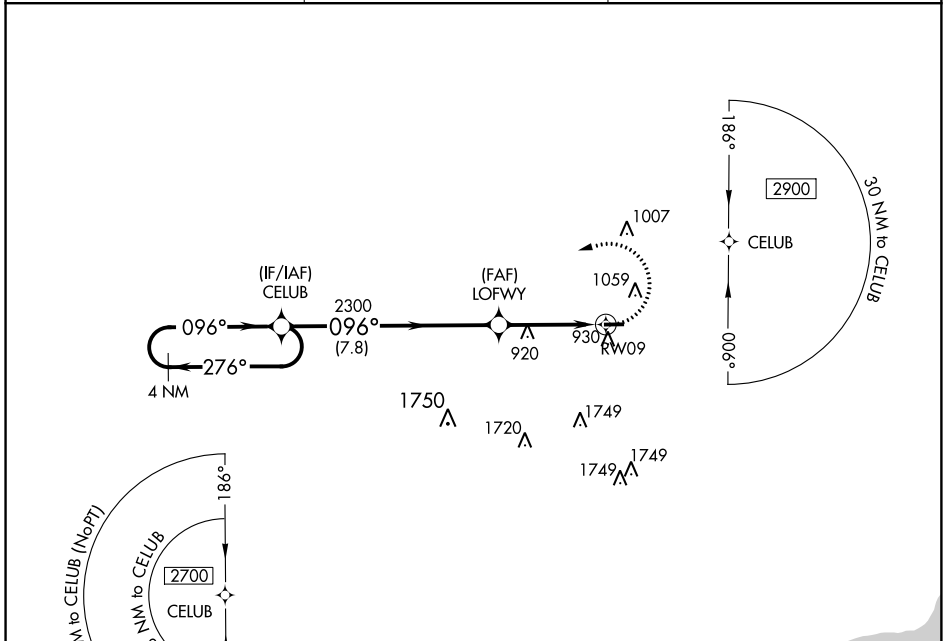
OAKLAND/TROY (VLL)

APP CRS 096°	Rwy Idg TDZE Apt Elev	3549 727 727
------------------------	-----------------------------	---

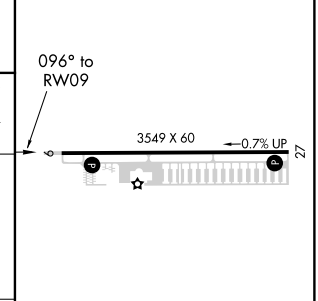
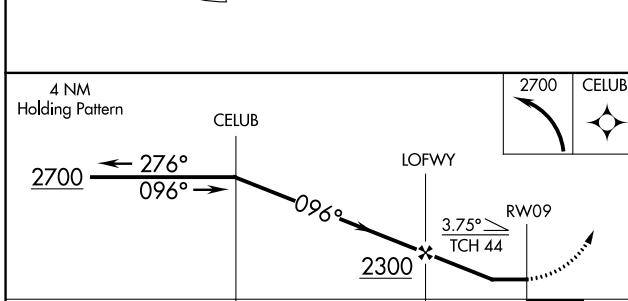
▼ DME/DME RNP-0.3 NA. Straight-in Rwy 9 at night, operational VGSi required, remain on or above VGSi glidepath until threshold. Circling Rwy 27 NA at night. Rwy 9 helicopter visibility reduction below 1 SM NA.

MISSED APPROACH:
Climbing left turn to 2700
direct CELUB and hold.

AWOS-3 119.475	DETROIT APP CON 134.3 284.0	UNICOM 123.05 (CTAF) 0
--------------------------	---------------------------------------	----------------------------------



ELEV 727	TDZE 727
----------	----------



CATEGORY	A	B	C	D
LNNAV MDA	1220-1	493 (500-1)	1220-1 ³ / ₈ 493 (500-1 ³ / ₈)	NA
C CIRCLING	1400-1	673 (700-1)	1400-2 673 (700-2)	NA

930
MIRL Rwy 9-27 0

RNAV (GPS) RWY 9

EC-1, 12 SEP 2019 to 10 OCT 2019

EC-1, 12 SEP 2019 to 10 OCT 2019