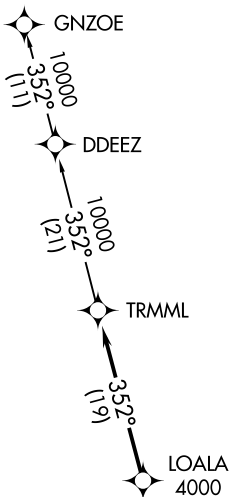


**TOP ALTITUDE:  
ASSIGNED BY ATC**

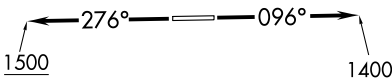


AWOS-3  
119.475  
CTAF  
123.05  
DETROIT DEP CON  
134.3 284.0

TAKEOFF MINIMUMS:

Rwy 9: Standard.

Rwy 27: Standard with minimum climb of 476' per NM to 1500.



- NOTE: RNAV 1.
- NOTE: RADAR required.
- NOTE: DME/DME/IRU or GPS required.
- NOTE: Turbojet departures at/above 10000, maintain 280K until advised by ATC.

NOTE: Chart not to scale.



DEPARTURE ROUTE DESCRIPTION

TAKEOFF RUNWAY 9: Climb on heading 096° to 1400 then as assigned for RADAR vectors to cross LOALA at or above 4000, thence....

TAKEOFF RUNWAY 27: Climb on heading 276° to 1500 then as assigned for RADAR vectors to cross LOALA at or above 4000, thence....

....on track 352° to TRMML, then on (transition). Maintain ATC assigned altitude, expect filed altitude 10 minutes after departure.

GNZOE TRANSITION (TRMML2.GNZOE):