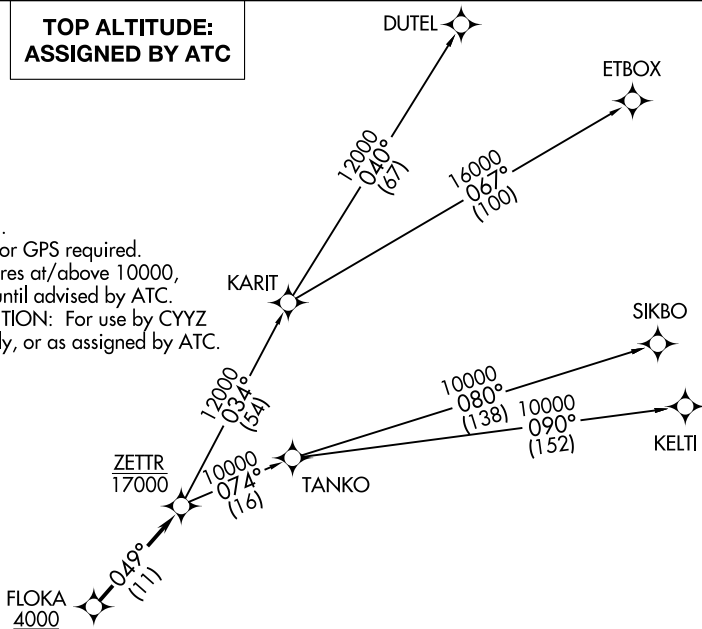


AWOS-3
119.475
CTAF
123.05
DETROIT DEP CON
134.3 284.0

**TOP ALTITUDE:
ASSIGNED BY ATC**

NOTE: RNAV 1.
NOTE: RADAR required.
NOTE: DME/DME/IRU or GPS required.
NOTE: Turbojet departures at/above 10000,
maintain 280K until advised by ATC.
NOTE: TANKO TRANSITION: For use by CYYZ
area arrivals only, or as assigned by ATC.



TAKEOFF MINIMUMS:

Rwy 9: Standard.

Rwy 27: Standard with minimum climb
of 476' per NM to 1500.

▼ DEPARTURE ROUTE DESCRIPTION

TAKEOFF RUNWAY 9: Climb on heading 096° to 1400 then as assigned for RADAR vectors to cross FLOKA at or above 4000, thence....

TAKEOFF RUNWAY 27: Climb on heading 276° to 1500 then as assigned for RADAR vectors to cross FLOKA at or above 4000, thence....

....on track 049° to cross ZETTR at or below 17000, then on (transition). Maintain ATC assigned altitude, expect filed altitude 10 minutes after departure.

DUTEL TRANSITION (ZETTR2.DUTEL):

ETBOX TRANSITION (ZETTR2.ETBOX):

KELTI TRANSITION (ZETTR2.KELTI):

SIKBO TRANSITION (ZETTR2.SIKBO):

TANKO TRANSITION (ZETTR2.TANKO):

NOTE: Chart not to scale.

