

WAAS CH 78314 W13A	APP CRS 131°	Rwy Idg 6401
		TDZE 1470
		Apt Elev 1470

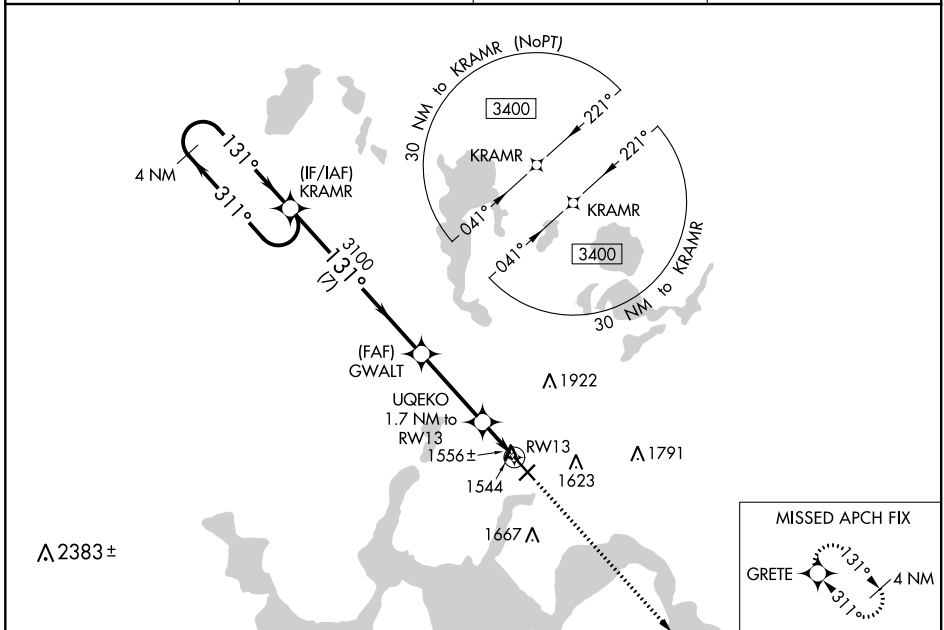
RNAV (GPS) RWY 13

DEVILS LAKE RGNL (DVL)

⚠ For uncompensated Baro-VNAV systems, LNAV/VNAV NA below -17°C (2°F) or above 54°C (130°F). DME/DME RNP-0.3 NA. Baro-VNAV and VDP NA when using Cando altimeter setting. When local altimeter setting not received, use Cando altimeter setting and increase all DA 63 feet and all MDA 80 feet, increase LPV and LNAV/VNAV all. Cats visibility ¼ mile, LNAV and Circling Cats C and D visibility ½ mile.

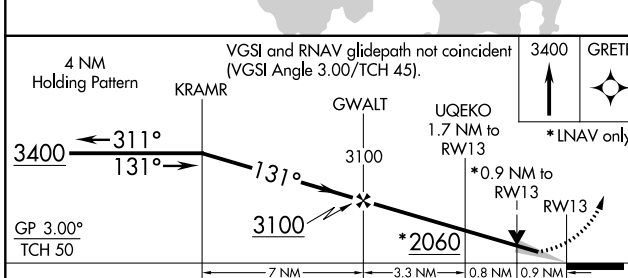
MISSED APPROACH: Climb to 3400 direct GRETE and hold.

AWOS-3PT 125.875	MINNEAPOLIS CENTER 124.2 270.3	GRAND FORKS RADIO 122.3	UNICOM 122.8 (CTAF) 0
----------------------------	--	-----------------------------------	---------------------------------



NC-1, 12 SEP 2019 to 10 OCT 2019

NC-1, 12 SEP 2019 to 10 OCT 2019



ELEV 1470	D	TDZE 1470
-----------	---	-----------

CATEGORY	A	B	C	D
LPV DA		1720-¾	250 (300-¾)	
LNAV/VNAV DA		1791-1	321 (400-1)	
LNAV MDA		1820-1	350 (400-1)	
CIRCLING	2000-1	530 (600-1)	2240-2¼ 770 (800-2¼)	2240-2½ 770 (800-2½)

