

WAAS CH <b>78417</b> <b>W21A</b>	APP CRS <b>218°</b>	Rwy Idg TDZE Apt Elev	<b>4314</b> <b>1449</b> <b>1470</b>
--	------------------------	-----------------------------	---

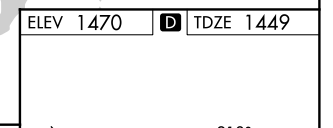
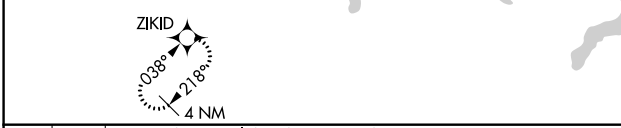
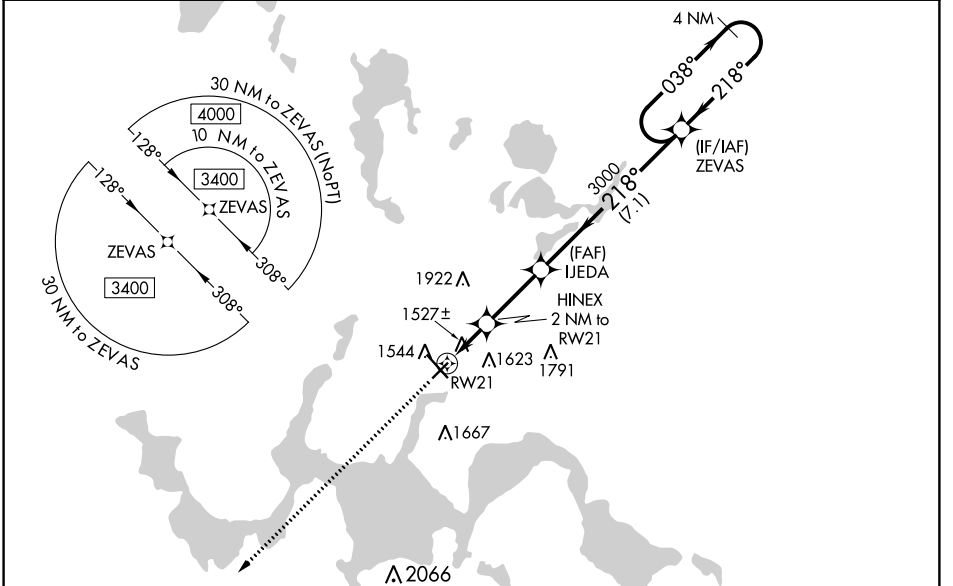
# RNAV (GPS) RWY 21

DEVILS LAKE RGNL (DVL)

**⚠** For uncompensated Baro-VNAV systems, LNAV/VNAV NA below -17°C (2°F) or above 54°C (130°F). DME/DME RNP-0.3 NA. Helicopter visibility reduction below 3/4 SM NA. Baro-VNAV NA when using Cando altimeter setting. VDP NA with Cando altimeter setting. When local altimeter setting not received, use Cando altimeter setting and increase all DA 63 feet, and all MDA 80 feet, increase LNAV and Circling Cats C and D visibility 1/4 mile.

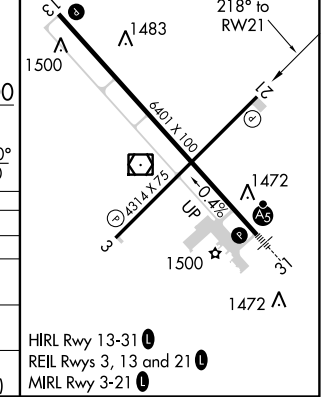
**MISSED APPROACH:** Climb to 3400 direct ZIKID and hold.

AWOS-3PT <b>125.875</b>	MINNEAPOLIS CENTER <b>124.2 270.3</b>	GRAND FORKS RADIO <b>122.3</b>	UNICOM <b>122.8 (CTAF)</b>
----------------------------	--	-----------------------------------	-------------------------------



3400	ZIKID	VGS1 and RNAV glidepath not coincident (VGS1 Angle 3.00/TCH 25).	ZEVAS	4 NM Holding Pattern
*LNAV only.	HINEX 2 NM to RW21	IJEDA	3000	038° → 3400
	*1.1 NM to RW21		218°	← 218°
			2120*	3000
				GP 3.00° TCH 50

CATEGORY	A	B	C	D
LPV DA		1699-1	250 (300-1)	
LNAV/VNAV DA		1699-1	250 (300-1)	
LNAV MDA		1800-1	351 (400-1)	
<b>C</b> CIRCLING	2000-1	530 (600-1)	2240-2 1/4 770 (800-2 1/4)	2240-2 1/2 770 (800-2 1/2)



NC-1, 12 SEP 2019 to 10 OCT 2019

NC-1, 12 SEP 2019 to 10 OCT 2019