

VOR/DME DVL 111.0 Chan 47	APP CRS 138°	Rwy Idg TDZE Apt Elev	6401 1470 1470
--	------------------------	-----------------------------	---

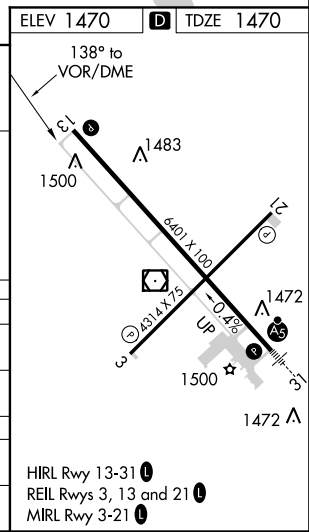
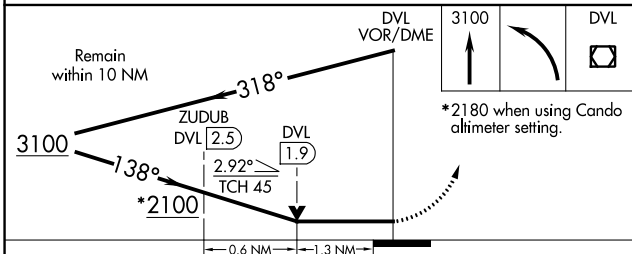
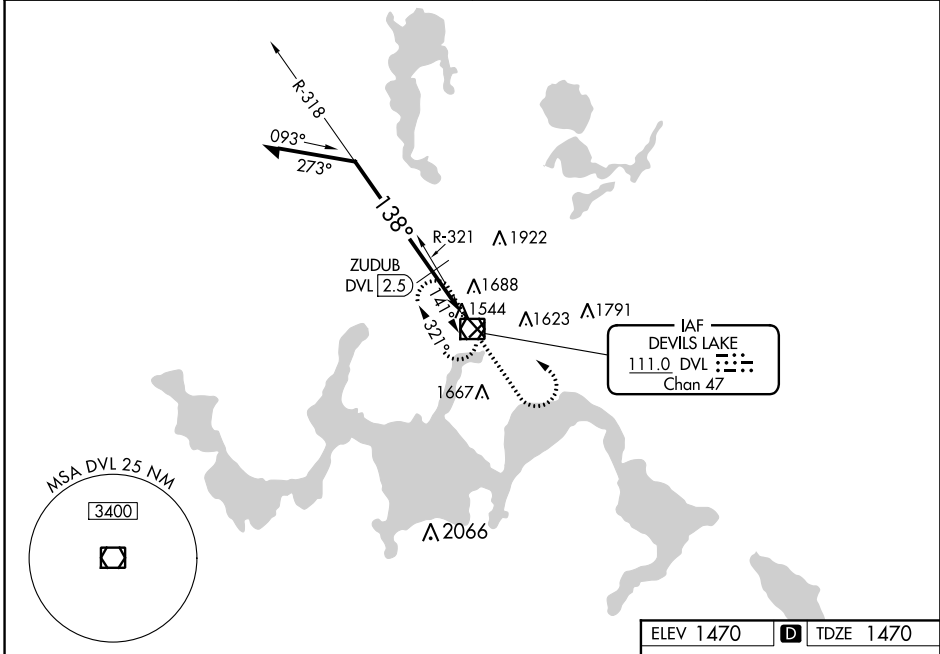
VOR RWY 13

DEVILS LAKE RGNL (DVL)

⚠ VDP NA with Cando altimeter setting. When local altimeter setting not received, use Cando altimeter setting and increase all MDA 80 feet, and increase S-13 and Circling Cats C and D visibility $\frac{1}{4}$ mile, increase ZUDUB fix minimums S-13 and Circling Cats C and D visibility $\frac{1}{4}$ mile.

MISSED APPROACH: Climb to 3100 then left turn direct DVL VOR/DME and hold.

AWOS-3PT 125.875	MINNEAPOLIS CENTER 124.2 270.3	GRAND FORKS RADIO 122.3	UNICOM 122.8 (CTAF)
----------------------------	--	-----------------------------------	-------------------------------



CATEGORY	A	B	C	D
S-13	2100-1	630 (700-1)	2100-1 $\frac{3}{4}$	630 (700-1 $\frac{3}{4}$)
C CIRCLING	2100-1	630 (700-1)	2240-2 $\frac{1}{4}$ 770 (800-2 $\frac{1}{4}$)	2240-2 $\frac{1}{2}$ 770 (800-2 $\frac{1}{2}$)
ZUDUB FIX MINIMUMS (DME REQUIRED)				
S-13	1940-1	470 (500-1)	1940-1 $\frac{3}{8}$	470 (500-1 $\frac{3}{8}$)
C CIRCLING	2000-1	530 (600-1)	2240-2 $\frac{1}{4}$ 770 (800-2 $\frac{1}{4}$)	2240-2 $\frac{1}{2}$ 770 (800-2 $\frac{1}{2}$)

HIRL Rwy 13-31 **⓪**
REIL Rws 3, 13 and 21 **⓪**
MIRL Rwy 3-21 **⓪**

NC-1, 12 SEP 2019 to 10 OCT 2019

NC-1, 12 SEP 2019 to 10 OCT 2019