

VOR/DME DVL 111.0 Chan 47	APP CRS 030°	Rwy Idg 4314 TDZE 1450 Apt Elev 1470
---	------------------------	---

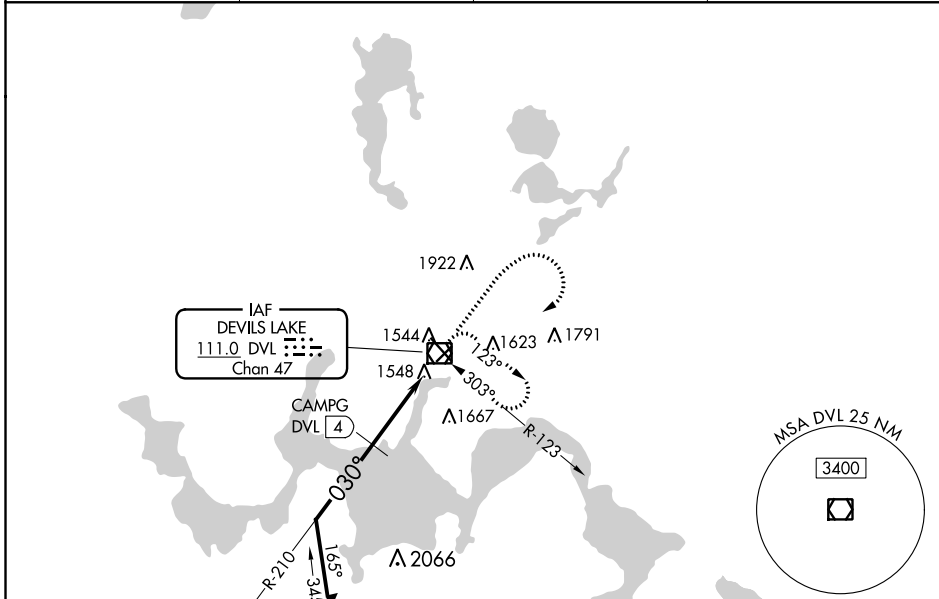
VOR RWY 3

DEVILS LAKE RGNL (DVL)

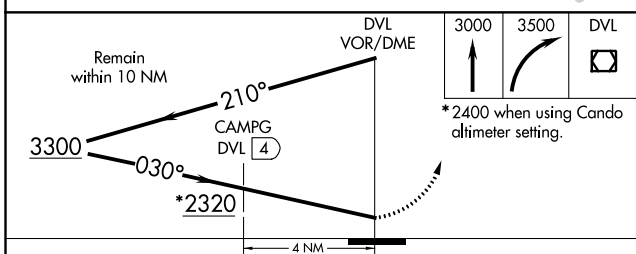
⚠ When local altimeter setting not received, use Cando altimeter setting and increase all MDA 80 feet, increase S-3 Cat A and Circling Cats C/D visibility ¼ SM, CAMPG fix minimums S-3 Cats C/D visibility ⅓ SM and Circling Cats C/D visibility ¼ SM. Helicopter visibility reduction below 1 SM NA.

MISSED APPROACH: Climb to 3000 then climbing right turn to 3500 direct DVL VOR/DME and hold.

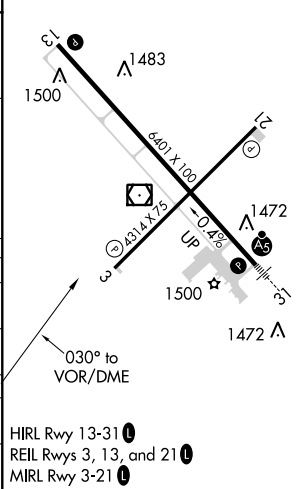
AWOS-3PT 125.875	MINNEAPOLIS CENTER 124.2 270.3	GRAND FORKS RADIO 122.3	UNICOM 122.8 (CTAF)
----------------------------	--	-----------------------------------	-------------------------------



ELEV 1470	D TDZE 1450
------------------	---------------------------



CATEGORY	A	B	C	D
S-3	2320-1 870 (900-1)	2320-1¼ 870 (900-1¼)	2320-2½ 870 (900-2½)	870 (900-2½)
C CIRCLING	2320-1¼	850 (900-1¼)	2320-2½ 850 (900-2½)	2320-2¾ 850 (900-2¾)
CAMPG FIX MINIMUMS				
S-3	1820-1 370 (400-1)			
C CIRCLING	2000-1	530 (600-1)	2240-2¼ 770 (800-2¼)	2240-2½ 770 (800-2½)



HIRL Rwy 13-31 **⓪**
REIL Rwys 3, 13, and 21 **⓪**
MIRL Rwy 3-21 **⓪**

NC-1, 12 SEP 2019 to 10 OCT 2019

NC-1, 12 SEP 2019 to 10 OCT 2019