

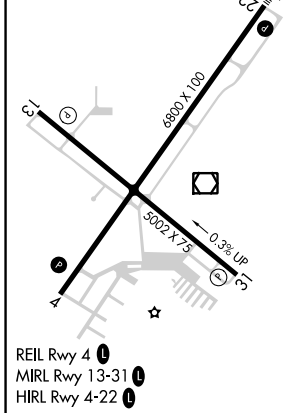
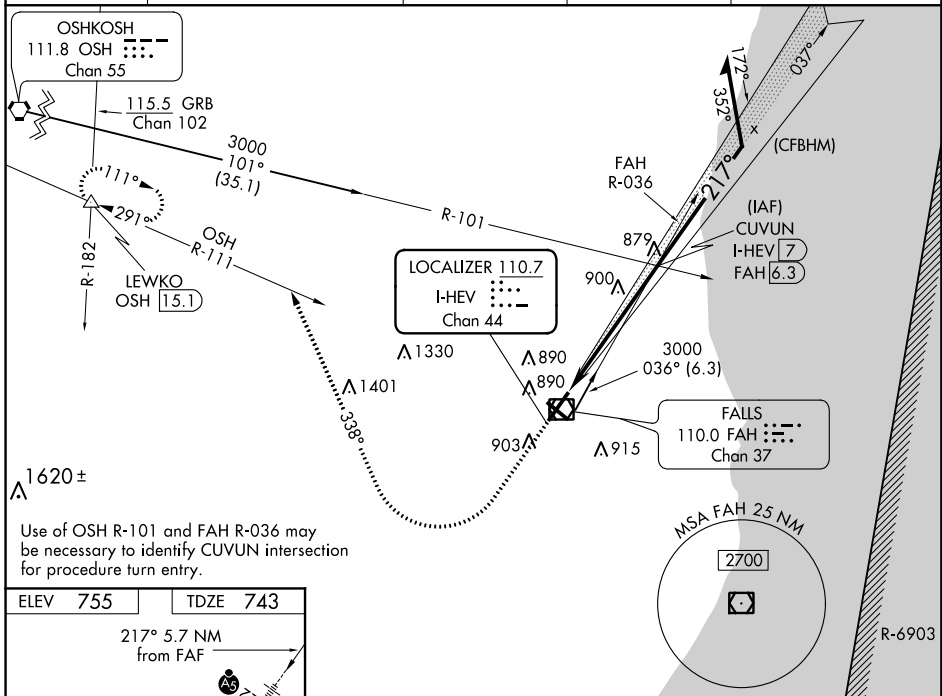
LOC/DME I-HEV <b>110.7</b> Chan <b>44</b>	APP CRS <b>217°</b>	Rwy Idg TDZE <b>743</b> Apt Elev <b>755</b>	<b>6800</b> <b>743</b> <b>755</b>
---	------------------------	---	---

# ILS or LOC/DME RWY 22

SHEBOYGAN COUNTY MEMORIAL (SBM)

NA	MALSR 	MISSED APPROACH: Climb to 1400 then climbing right turn to 3000 on heading 338° and OSH VORTAC R-111 to LEWKO INT/OSH 1.5.1 DME and hold.		
		ASOS <b>110.0</b>	MILWAUKEE APP CON <b>127.375 263.075</b>	GCO <b>121.725</b>

UNICOM <b>122.7 (CTAF)</b>
-------------------------------



1400	3000	OSH R-111	LEWKO	CUVUN I-HEV <b>7</b>	Remain within 10 NM
		hdg 338°			

\*LOC only.

1 NM 4.7 NM

CATEGORY	A	B	C	D
S-ILS 22	993-1/2 250 (300-1/2)			
S-LOC 22	1120-1/2 377 (400-1/2)	1120-5/8 377 (400-5/8)		
CIRCLING	1220-1 465 (500-1)	1220-1 1/2 465 (500-1 1/2)	1320-2	565 (600-2)

EC-3, 12 SEP 2019 to 10 OCT 2019

EC-3, 12 SEP 2019 to 10 OCT 2019