

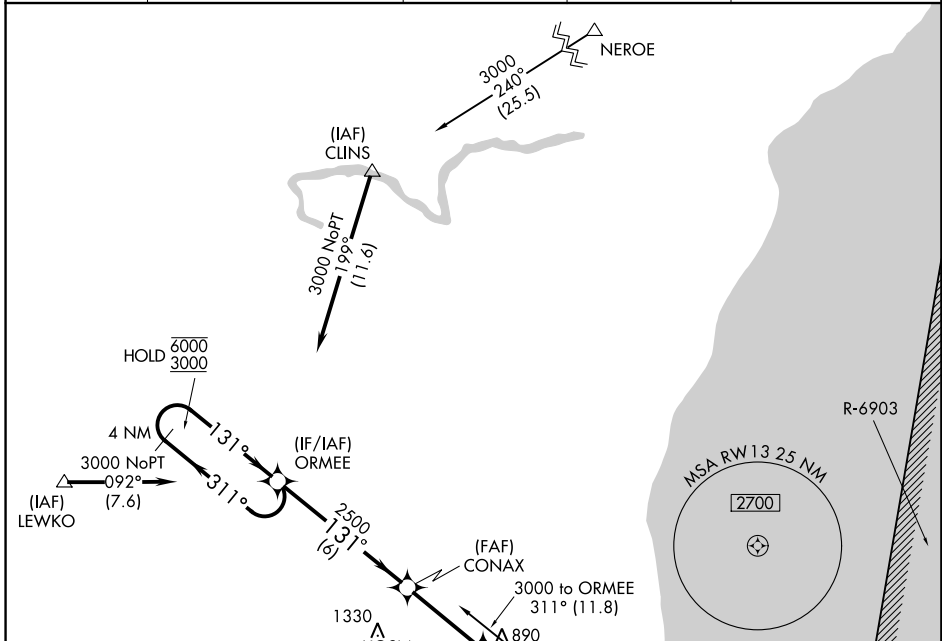
APP CRS	Rwy Idg	5002
131°	TDZE	755
	Apt Elev	755

RNAV (GPS) RWY 13

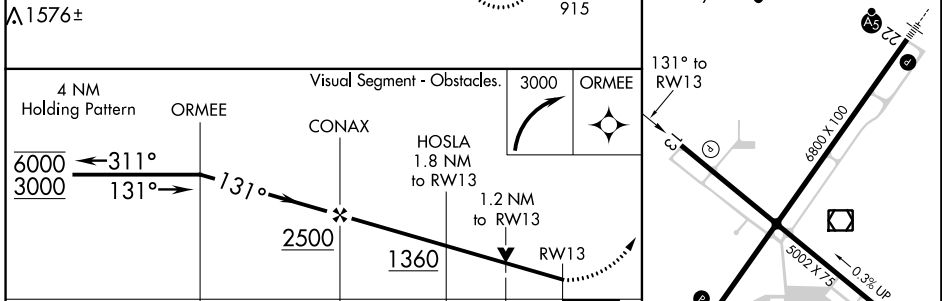
SHEBOYGAN COUNTY MEMORIAL (SBM)

RNP APCH.	MISSED APPROACH: Climbing right turn to 3000 direct ORMEE and hold.
▼ Rwy 13 helicopter visibility reduction below 3/4 SM NA.	

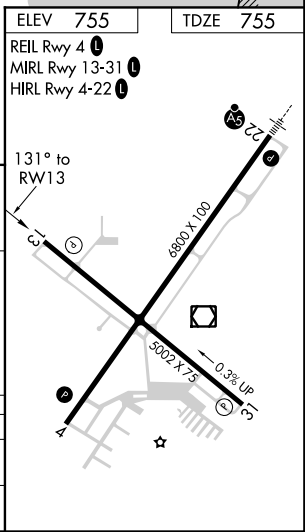
ASOS	MILWAUKEE APP CON	GCO	CLNC DEL	UNICOM
110.0	127.375 263.075	121.725	127.375	122.7 (CTAF) 1



ELEV	755	TDZE	755
REIL Rwy 4	1	MIRL Rwy 13-31	1
HIRL Rwy 4-22	1		



CATEGORY	A	B	C	D
LNVA MDA	1160-1	405 (500-1)	1160-1¼	405 (500-1¼)
CIRCLING	1220-1	465 (500-1)	1220-1½	1320-2 465 (500-1½) 565 (600-2)



EC-3, 12 SEP 2019 to 10 OCT 2019

EC-3, 12 SEP 2019 to 10 OCT 2019