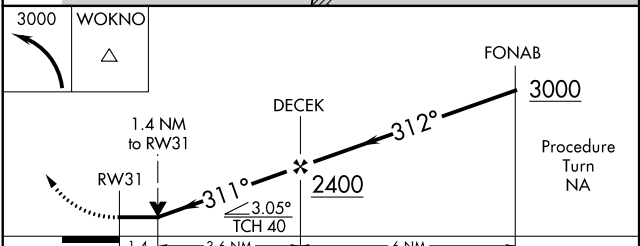
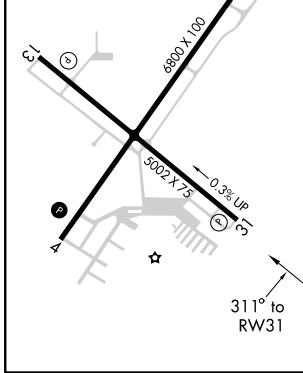
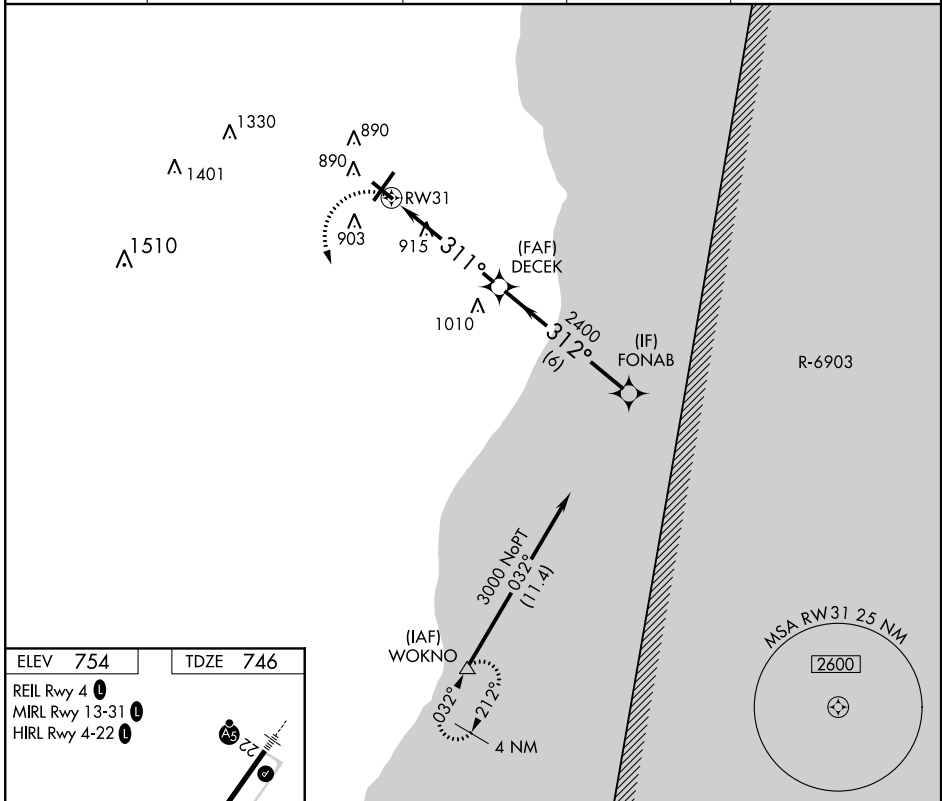


APP CRS <b>311°</b>	Rwy Idg <b>5002</b>
	TDZE <b>746</b>
	Apt Elev <b>754</b>

# RNAV (GPS) RWY 31

SHEBOYGAN COUNTY MEMORIAL (SBM)

RNP APCH.				MISSED APPROACH: Climbing left turn to 3000 direct WOKNO and hold.	
Rwy 31 helicopter visibility reduction below 3/4 SM NA.					
ASOS <b>110.0</b>	MILWAUKEE APP CON <b>127.375 263.075</b>	GCO <b>121.725</b>	CLNC DEL <b>127.375</b>	UNICOM <b>122.7 (CTAF) 1</b>	



CATEGORY	A	B	C	D
LNAV MDA	1220-1 474 (500-1)	1220-1¼ 474 (500-1¼)	1220-1½ 474 (500-1½)	1220-1½ 474 (500-1½)
CIRCLING	1220-1 466 (500-1)	1220-1½ 466 (500-1½)	1320-2 466 (500-1½)	1320-2 566 (600-2)

EC-3, 12 SEP 2019 to 10 OCT 2019

EC-3, 12 SEP 2019 to 10 OCT 2019