

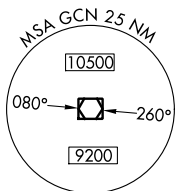
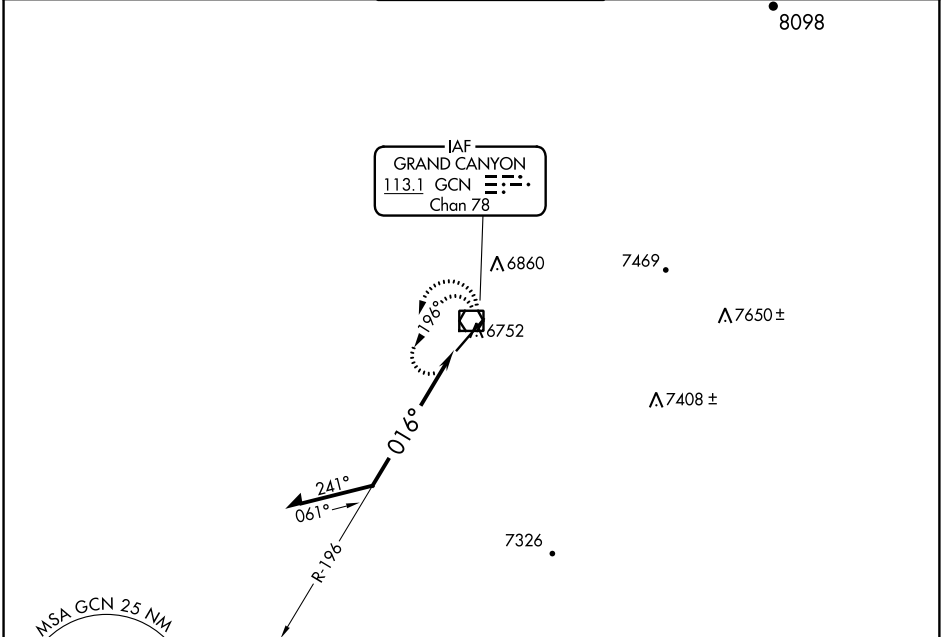
VOR/DME GCN 113.1 Chan 78	APP CRS 016°	Rwy Idg 8999 TDZE 6556 Apt Elev 6609
----------------------------------------	------------------------	-----------------------------------------------------------------

VOR RWY 3

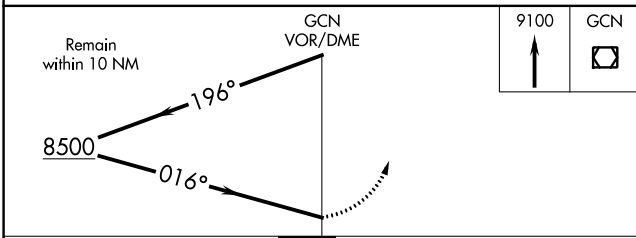
GRAND CANYON NATIONAL PARK (GCN)

⚠ Rwy 3 helicopter visibility reduction below 3/4 SM NA. MISSED APPROACH: Climb to 9100 in GCN VOR/DME holding pattern.

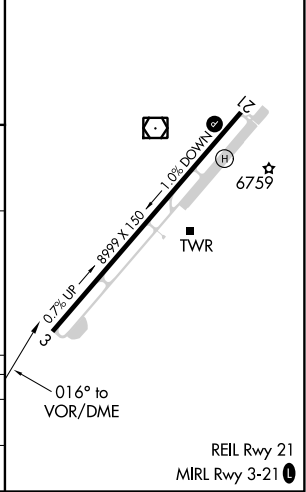
ATIS 124.3	LOS ANGELES CENTER 124.85 319.2	CANYON TOWER* 119.0 (CTAF) 0	GND CON 121.9	UNICOM 122.95
----------------------	-------------------------------------------	----------------------------------------	-------------------------	-------------------------



Descend in GCN VOR/DME holding pattern to 11000 before commencing procedure turn.



ELEV 6609	D TDZE 6556
-----------	--------------------



CATEGORY	A	B	C	D
S-3	7180-1	624 (600-1)	7180-1¾	624 (600-1¾)
C CIRCLING	7180-1 571 (600-1)	7200-1 591 (600-1)	7280-2 671 (700-2)	7620-3 1011 (1100-3)

REIL Rwy 21
MIRL Rwy 3-21 **0**

SW-4, 12 SEP 2019 to 10 OCT 2019

SW-4, 12 SEP 2019 to 10 OCT 2019