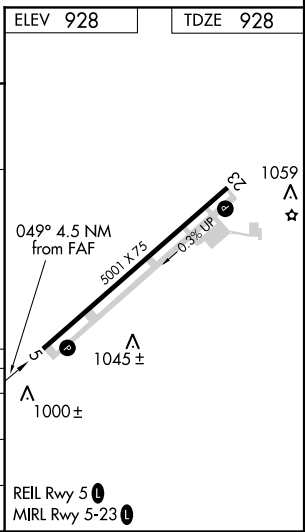
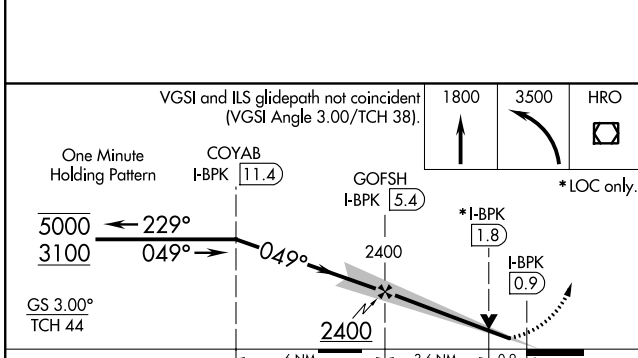
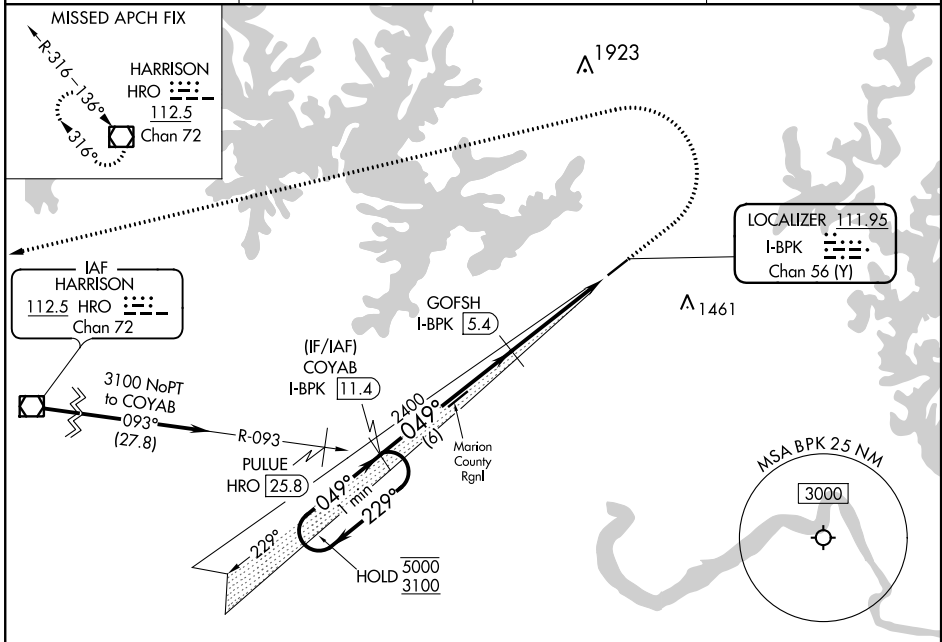


LOC/DME I-BPK 111.95 Chan 56(Y)	APP CRS 049°	Rwy Idg TDZE Apt Elev	5001 928 928
--	------------------------	-----------------------------	---

ILS or LOC RWY 5

BAXTER COUNTY (BPK)

DME required.		MISSED APPROACH: Climb to 1800 then climbing left turn to 3500 direct HRO VOR/DME and hold.	
<p>▼ Circling NA for Cat C, southeast of Rwy 5-23. ▲ NA Circling to Rwy 23 NA at night.</p>		ASOS 133.975	MEMPHIS CENTER 126.85 281.55
		GCO 121.72	UNICOM 123.0 (CTAF) 0



CATEGORY	A	B	C	D
S-ILS 5	1178-¾	250 (300-¾)		NA
S-LOC 5	1260-1	332 (400-1)		NA
◻ CIRCLING	1380-1 452 (500-1)	1400-1 472 (500-1)	1420-1½ 492 (500-1½)	NA

SC-1, 12 SEP 2019 to 10 OCT 2019

SC-1, 12 SEP 2019 to 10 OCT 2019