

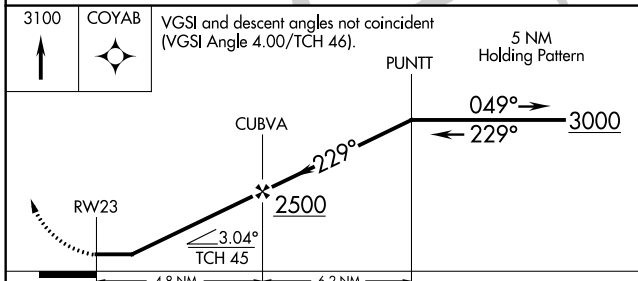
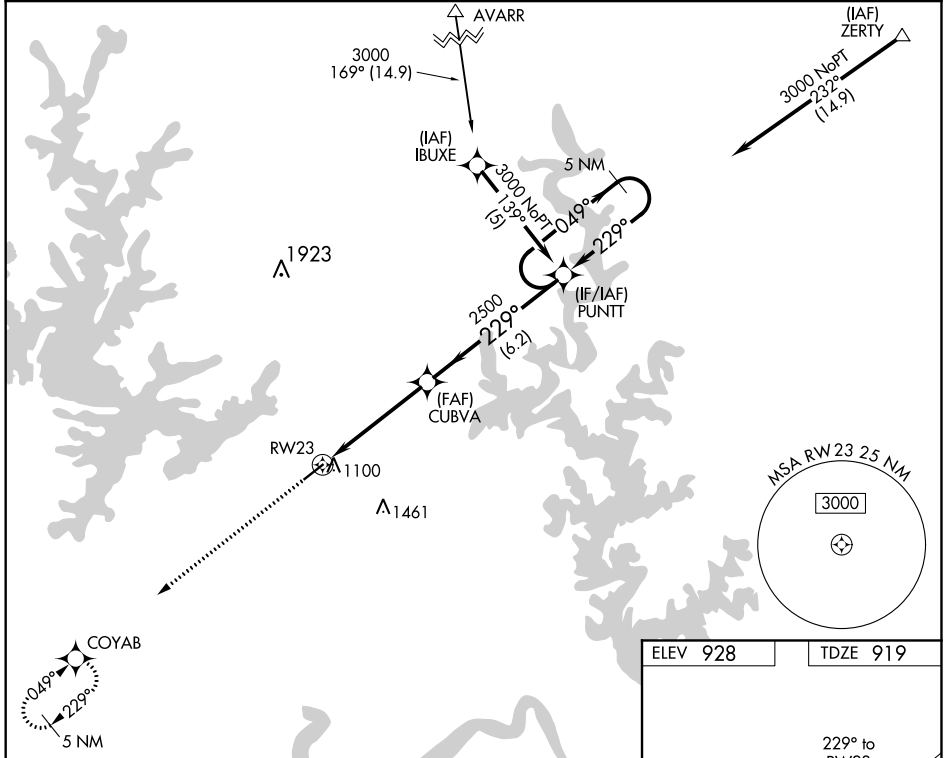
APP CRS	Rwy Idg	5001
229°	TDZE	919
	Apt Elev	928

RNAV (GPS) RWY 23

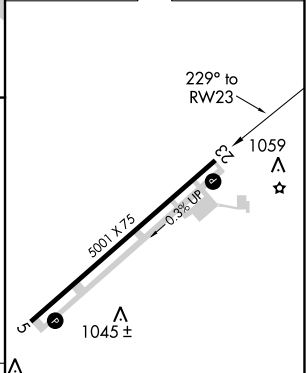
BAXTER COUNTY (BPK)

RNP APCH.	MISSED APPROACH: Climb to 3100 direct COYAB and hold.
<p>▼ Rwy 23 helicopter visibility reduction below 1 SM NA. When local altimeter setting not received, use Flippin altimeter setting and increase all MDAs 60 feet. Circling NA for Cat C, southeast of Rwy 5-23. Straight-in Rwy 23 NA at night, Circling Rwy 23 NA at night.</p>	

ASOS 133.975	MEMPHIS CENTER 126.85 281.55	GCO 121.72	UNICOM 123.0 (CTAF) 0
------------------------	--	----------------------	---------------------------------



ELEV 928	TDZE 919
----------	----------



CATEGORY	A	B	C	D
LNVA MDA	1360-1	441 (500-1)	1360-1 1/8 441 (500-1 1/8)	NA
C CIRCLING	1400-1	472 (500-1)	1420-1 1/2 492 (500-1 1/2)	NA

REIL Rwy 5 0	MIRL Rwy 5-23 0
---------------------	------------------------

SC-1, 12 SEP 2019 to 10 OCT 2019

SC-1, 12 SEP 2019 to 10 OCT 2019