

BORRN FOUR DEPARTURE (RNAV)

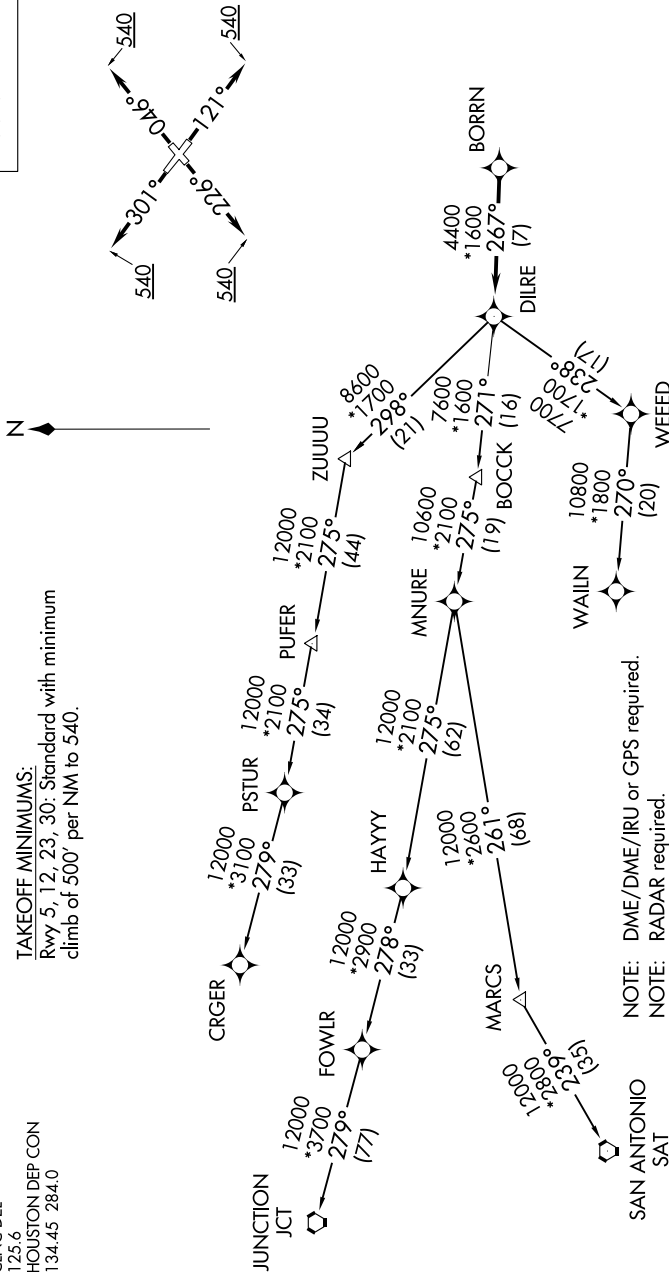
SC-5, 12 SEP 2019 to 10 OCT 2019

CTAF 122.7
CLNC DEL 125.6
HOUSTON DEP CON 134.45 284.0

TAKEOFF MINIMUMS:

Rwy 5, 12, 23, 30: Standard with minimum climb of 500' per NMI to 540.

TOP ALTITUDE:
ASSIGNED BY ATC



(NARRATIVE ON FOLLOWING PAGE)

NOTE: Chart not to scale.

SC-5, 12 SEP 2019 to 10 OCT 2019

BORRN FOUR DEPARTURE (RNAV)